

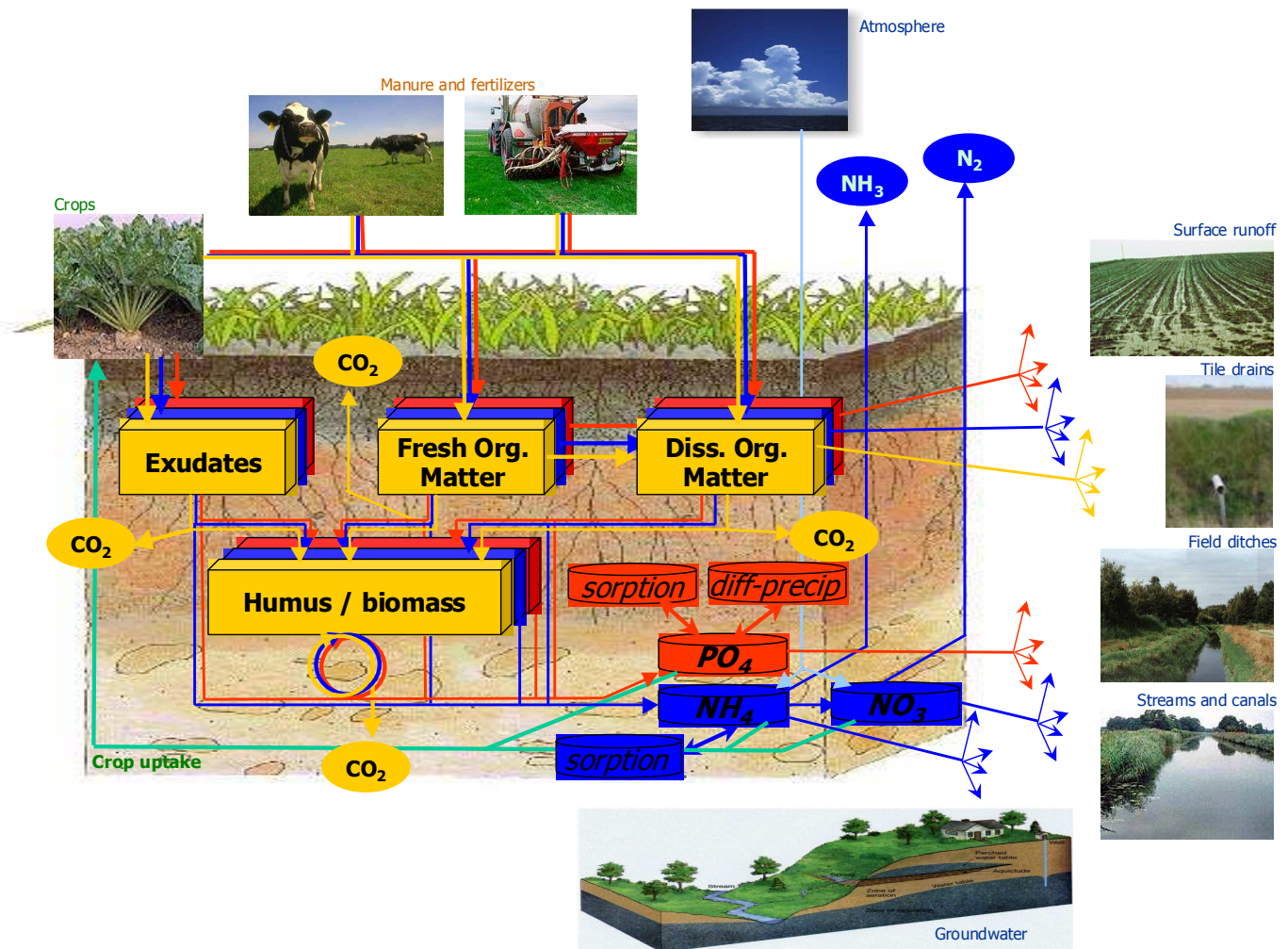


ALTErra

WAGENINGEN UR

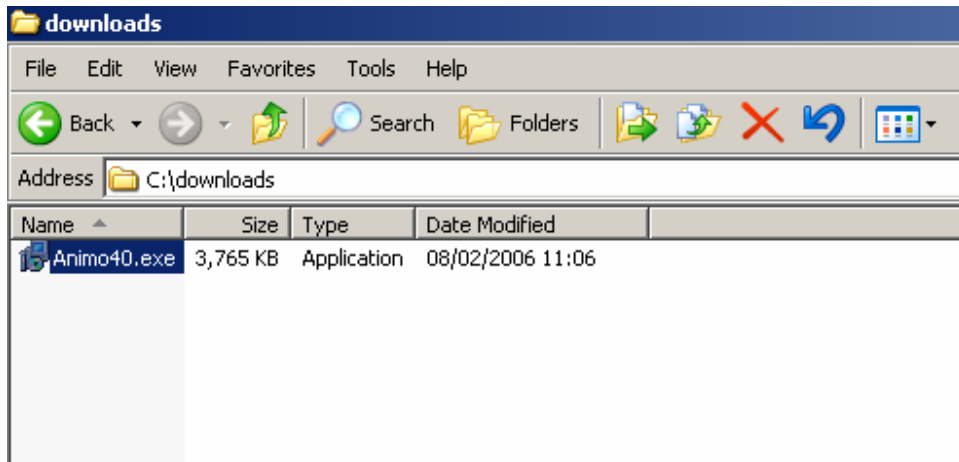
Installation guide ANIMO 4.0

Leo Renaud, febr. 2006

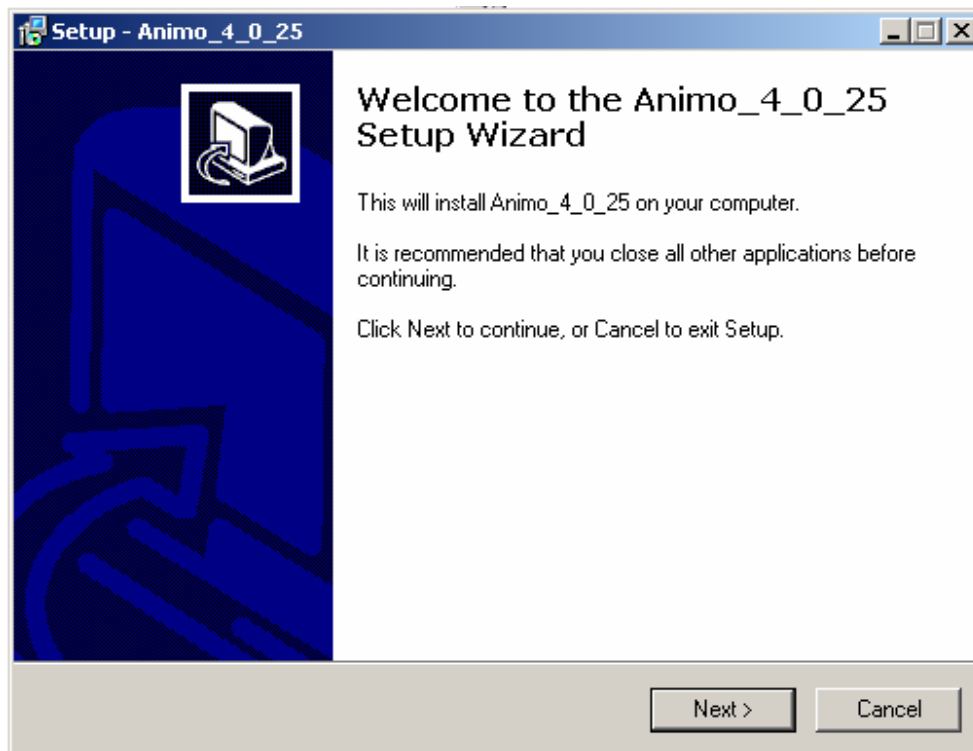


Installation guide ANIMO4.0

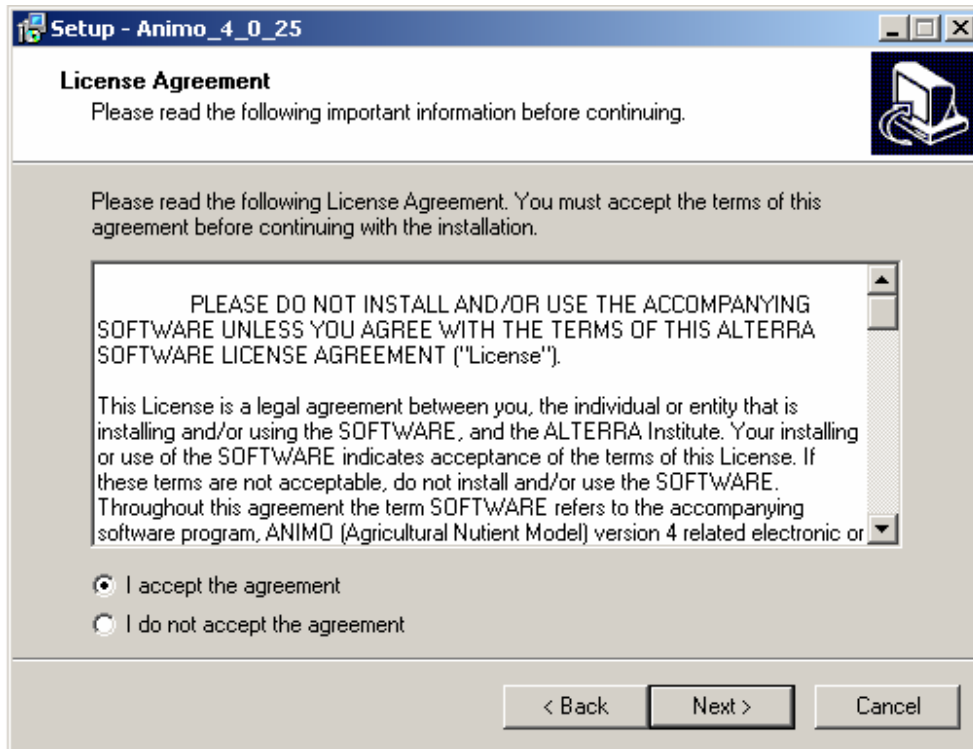
L.V. Renaud



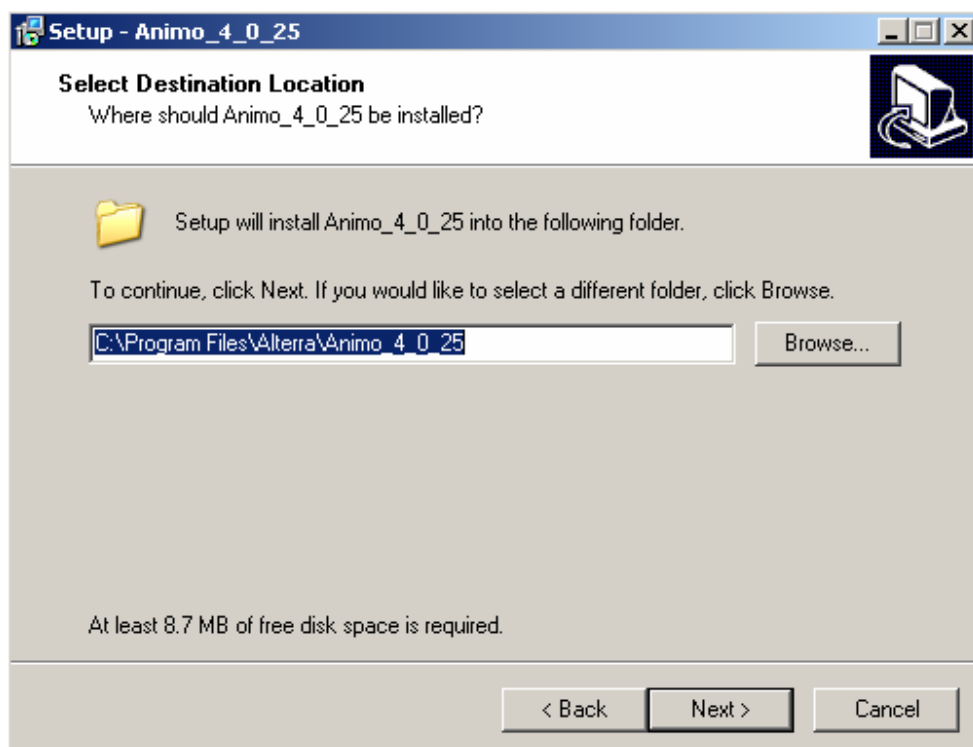
Double click on the Animo40.exe



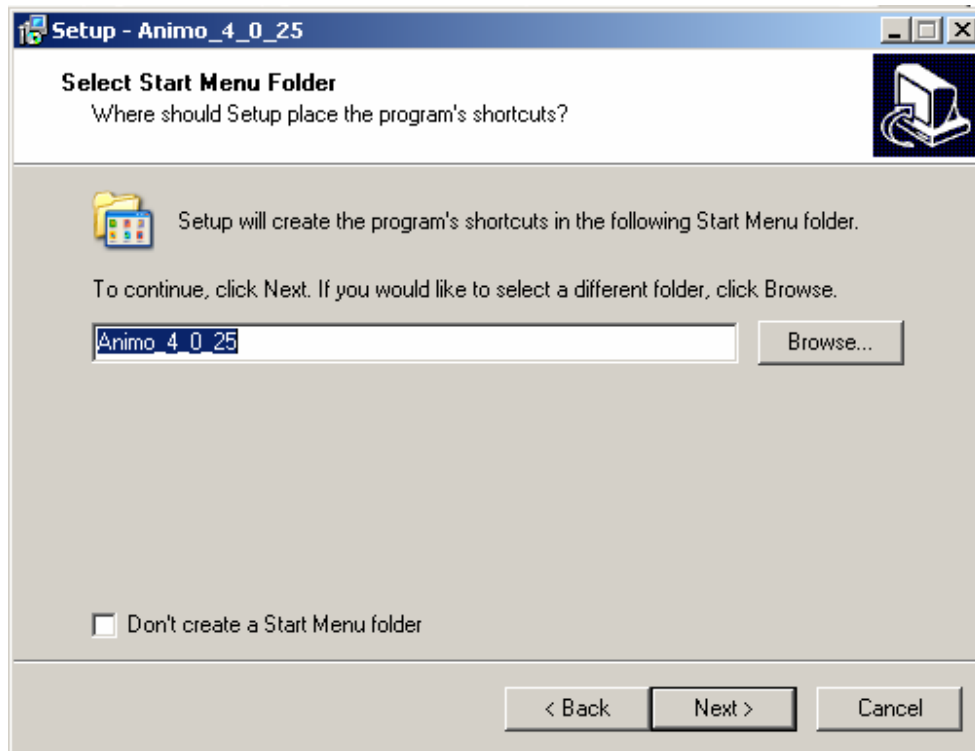
Press <Next >> button



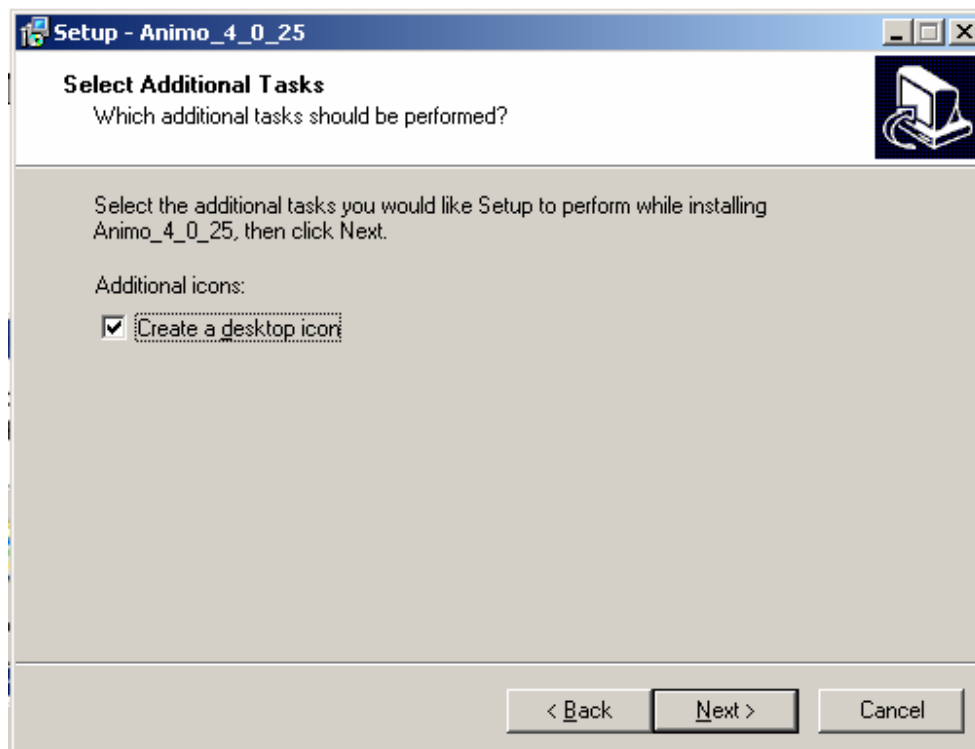
Check <I accept the agreement> and press <Next >> button



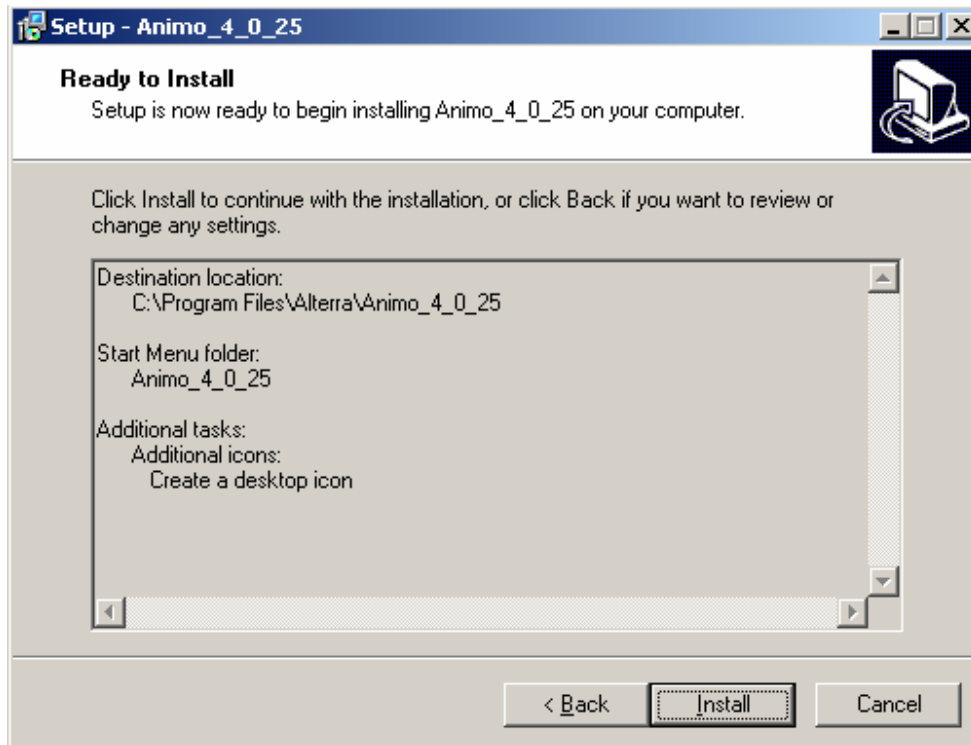
Select the destination location where Animo should be installed and press <Next >> button. Default is C:\Program Files\Alterra\Animo\_4\_0\_25.



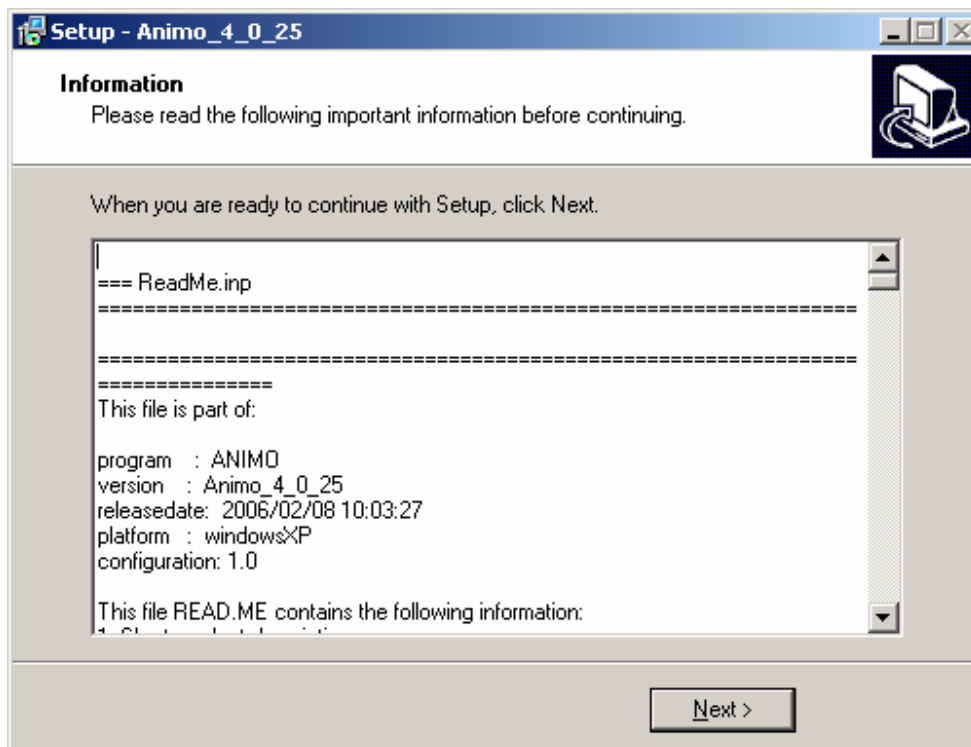
Select a start menu folder and press <Next >> button.



Check <Create a desktop icon> to place a shortcut on your desktop and press <Next >> button.



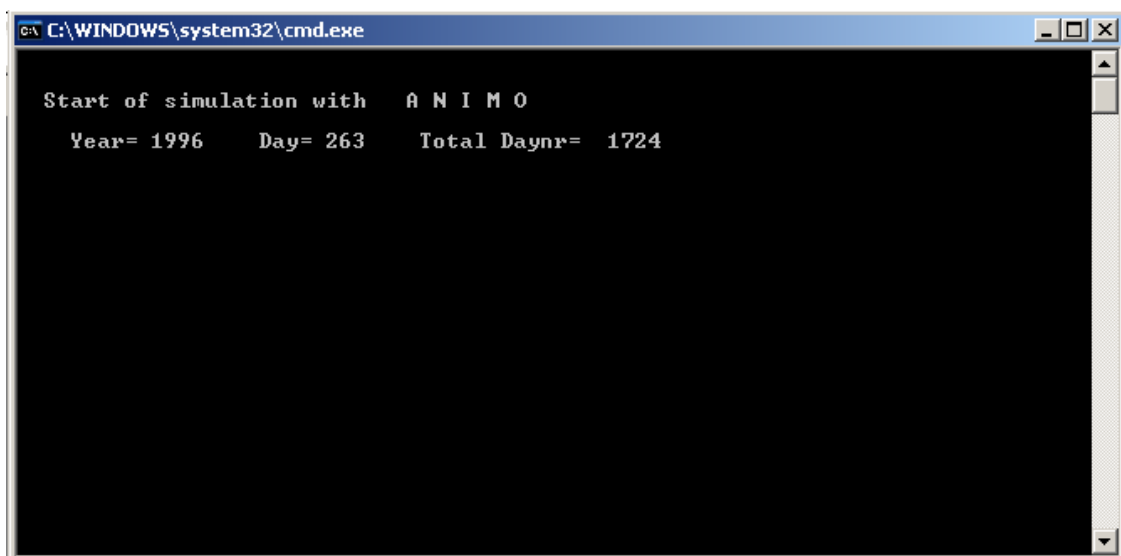
Press <Install> button.



Read the ReadMe.inp file and press <Next >> button.



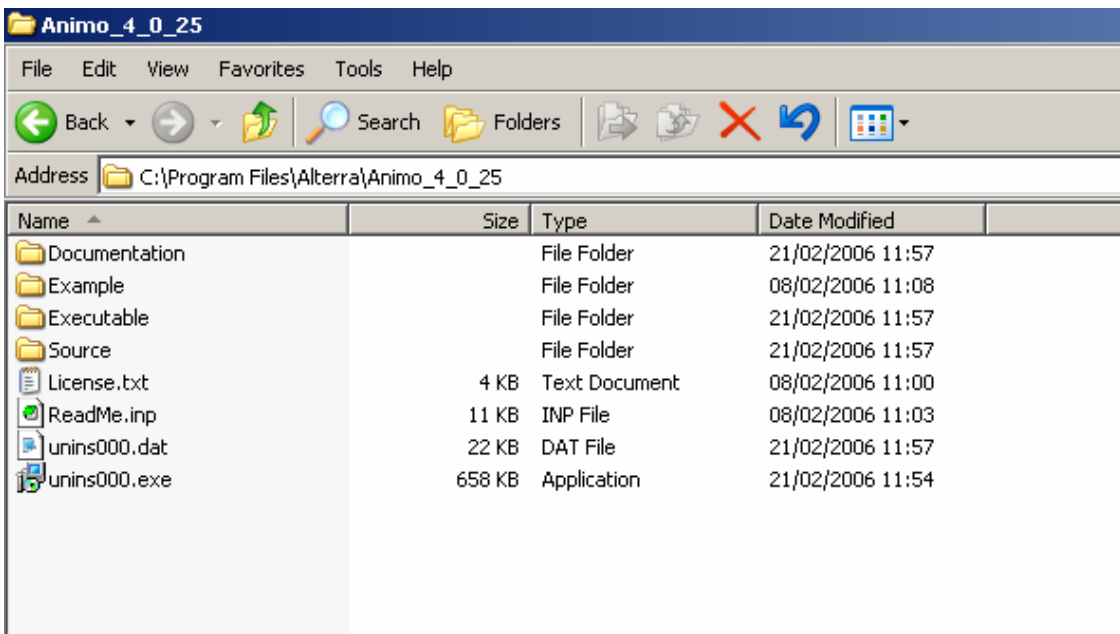
Check <Launch Animo\_4\_0\_25> to launch an example run and press <Next >> button.



A DOS prompt screen opens with the development of the run.

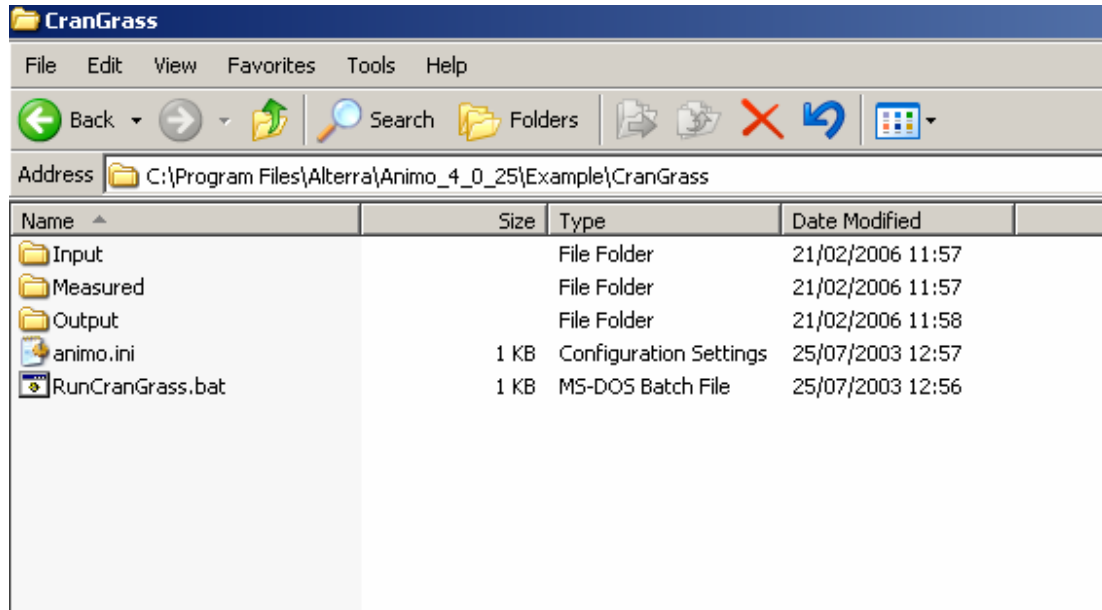
```
C:\WINDOWS\system32\cmd.exe
banhTP.Out
ban iRP.Out
ban iTP.Out
banoRP.Out
banoTP.Out
baomRP.Out
baomTP.Out
bapoRP.Out
bapoTP.Out
bappRP.Out
bappTP.Out
bawaRP.Out
bawaTP.Out
nitrate.Out
phosphat.Out
pw-P.Out
solu-For.Out
transfoRP.Out
transfoTP.Out
transfoRP.Out
transfoTP.Out
transfoRP.Out
transfoTP.Out
27 file(s) copied.
Press any key to continue . . .
```

After the example run is finished press any key to continue.



Location and the arrangement of the installed Animo components.





Location of the executed example run.

The example run is started by executing the RunCranGrass.bat.

Output of the example run is located in the Output folder.