

# Environmental Indicator Crop Protection

## Towards a universal measure

March 16, 2021



# Word of welcome

By Annelotte Crena de Iongh – IDH The Sustainable Trade Initiative

*Consortium member*

# Today's agenda

*During this information session, we aim to inform participants about the program and its progress and to gather ideas and insights to successfully internationalize the program.*

- Introduction to the program “Environmental Indicator Crop Protection”
- Presentation of the progress so far
- Exchange
  - Central question: *How can we best inform and engage international stakeholders to build support for the Environmental Impact Indicator?*
- Closure

# Please contribute

- Share your questions in the chat function
  - After the each key topic we can take some questions from the chat. The other questions will get a response in the session report.
- We will close with an interactive session facilitated with Mentimeter questions
  - Please keep a second screen or device available to contribute

# INTRODUCTION TO THE PROGRAM



# Pressure on pesticide use: the need for change

- Farmers are **obliged to register** the measures and plant protection products they use to protect their crops against pests and diseases.
- Society asks for high quality products with minimal environmental impact. Retail has **more stringent requirements**. These can differ per country and per customer.



# Need for an international scope

- Value chains are international and so are the issues around the environmental impact
- Developments around transparency and due diligence require an inclusive approach

# Public-private partnership to work to measure impact of crop protection in an integral way

- The objective of the program is to develop an indicator based on a calculation model that describes the effects of crop protection, in a way which:
  - Covers impact on environment and biodiversity;
  - Is in line with the needs of the sectors, market and society;
  - Is unambiguous and transparent;
  - Will be internationally applicable and accepted.



# Partners in the public-private consortium

## Consortium members



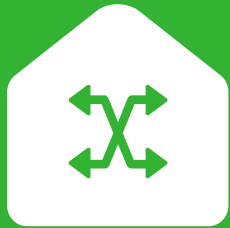
## International Expert Group

- Prof. Dr. Leo Posthuma, RIVM, The Netherlands
- Dr. Peter Fantke, Technical University of Denmark, Denmark
- Dr. Assumpció Antón, Institute of Agrifood Research and Technology, Spain
- Dr. Jörn Strassemeier, Julius Kuhn Institute, Germany

# The purpose of the Environmental Indicator Crop Protection

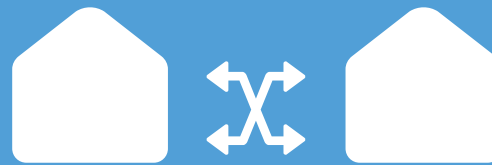
- Farmers can use the Environmental Indicator Crop Protection as a **basis for their selection of plant protection products** and **adjustment in their farm management**. Buyers can use the Indicator for their **purchasing policies**.
- The common objective is to **minimise the environmental impact and to provide full transparency** towards the market and society.

# Opportunity for comparisons



## Within the company:

- Between years and crop cycles
- Between different crop protection strategies in advance of the crop cycle



## Between companies that grow the same crops:

- Benchmarking
- Within the supply chain

# Four different user groups are envisioned



**Farmers** make their crop protection strategy more sustainable



**Value chain partners** compare the environmental impact of products from different origins



**Experts** analyse how the environmental impact of plant protection products can be reduced



**(Semi)Government** have a method to raise awareness among farmers and value chain partners on the environmental impact of plant protection products

# Questions?

We can take some questions from the chat now.

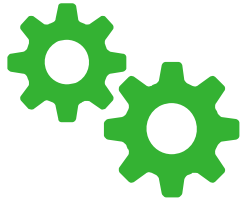
Other questions will get a response in the session report.



# PROGRESS SO FAR

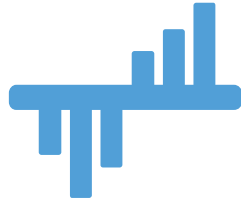


# What is the Indicator



## A method:

- Set of calculations
- Application manual
- Description of required data



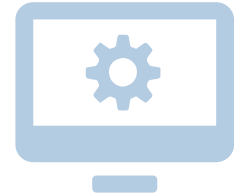
**Data** → information about the environmental impact of the plant protection products

- Per company, ha, m<sup>2</sup> or per unit of produce



## Summary of results

→ Communication with value chain partners and consumers



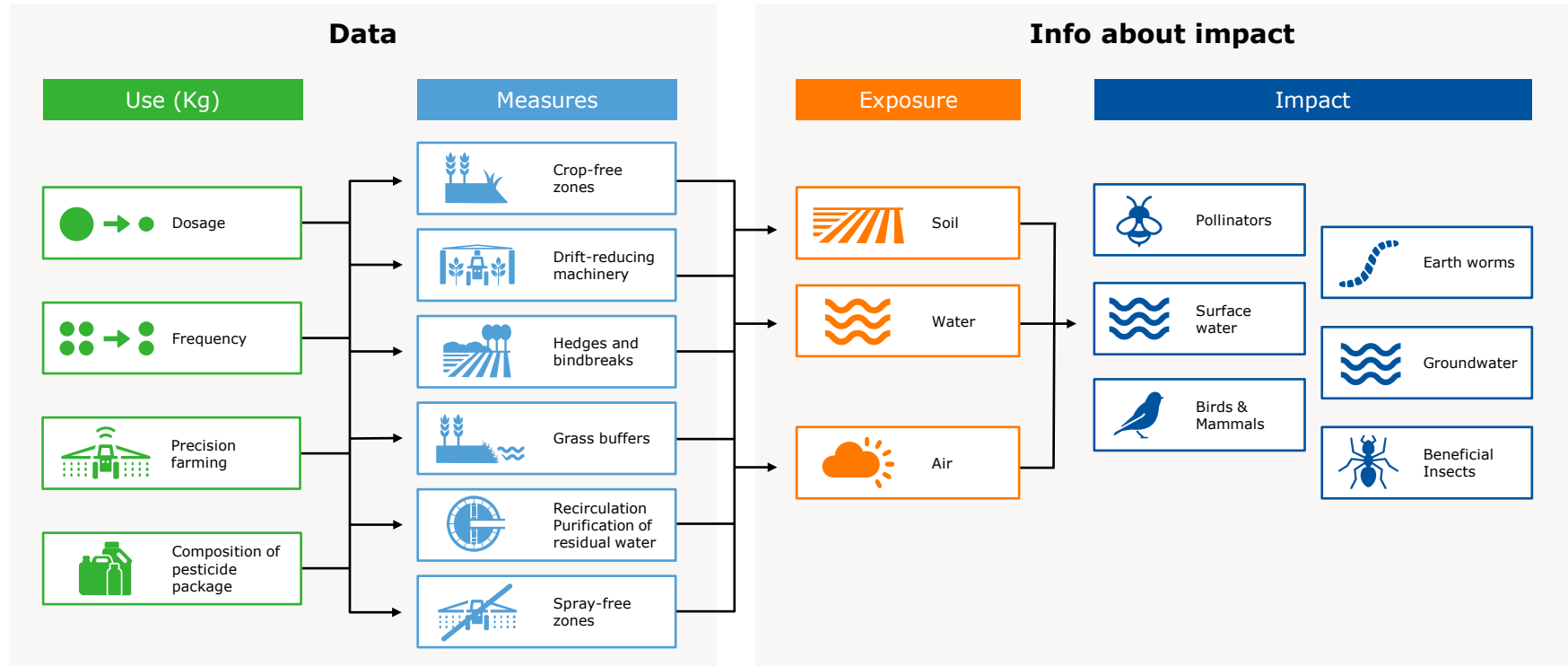
Available as **software module**

# The Indicator is a methodology

- The program develops a methodology, the Indicator.
  - It is to be used in existing systems.
  - It can be used in applications for crop protection management, certification, in value chain agreements, ...
  
- Data ownership within these applications will remain unchanged



# Data is translated into impact information



# The indicator's first version

## (Example of) input variables

Crop

Location

- Size
- Coordinates

Crop protectionproduct

Date of use

Dosage (kg/ha or l/ha)

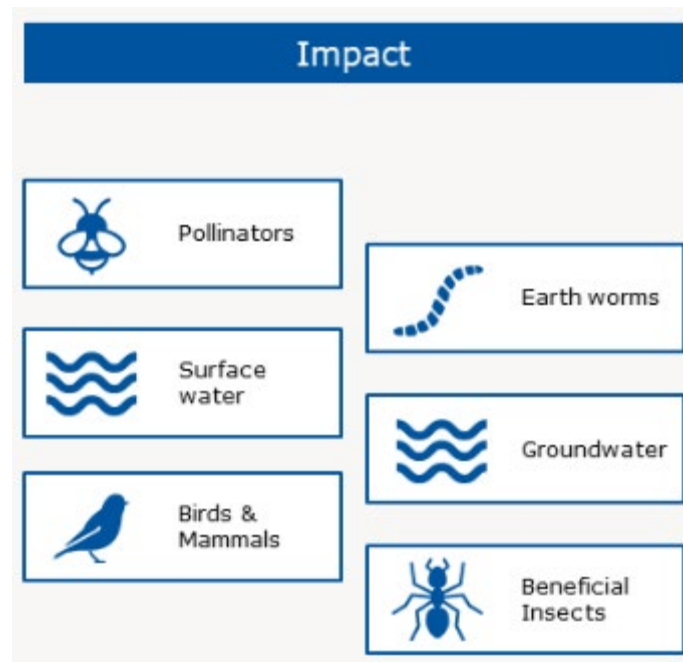
Size of treated area (ha)

Cultivation free zone (m)

Application mode

- Seed treatment
- Granulate
- Spraying followed by tillage
- Field sprayer
- Knapsack sprayer
- Etc.

Drift reduction classes



# Planning of the closing year 2021

Next steps towards delivery of Indicator by end-2021

- Pilots with the first version of the Indicator
- Development of software module
- Design of governance for the management of the Indicator method
- (International) outreach

# Next step is the pilot phase

## Pilots

- Start in February
- Data collection in March
- Input and evaluation in April-May
- Feedback in June-July

Production sector	Pilot crop
Fruit cultivation	Apple
Greenhouse cultivation	Tomato
Cut flowers production	Chrysanthemum
Arable farming	Potato (table)
Nursery stock	Avenue trees
Field vegetable cultivation	Strawberry
Nursery stock	Bedding plants / Pot plants
Tropical fruit cultivation	Bananas

# Questions?

We can take some questions from the chat now.

Other questions will get a response in the session report.



# EXCHANGE: HOW TO INFORM & ENGAGE



# How can we best inform and engage international stakeholders to build support for the Environmental Indicator Crop Protection?

---

Share your input

Go to [www.menti.com](https://www.menti.com) and use the code as indicated above the questions

# CLOSING





# Feel free to contact us

Visit

[www.environmentalcropindicator.com](http://www.environmentalcropindicator.com)

for more information about the Environmental  
Indicator Crop Protection.

