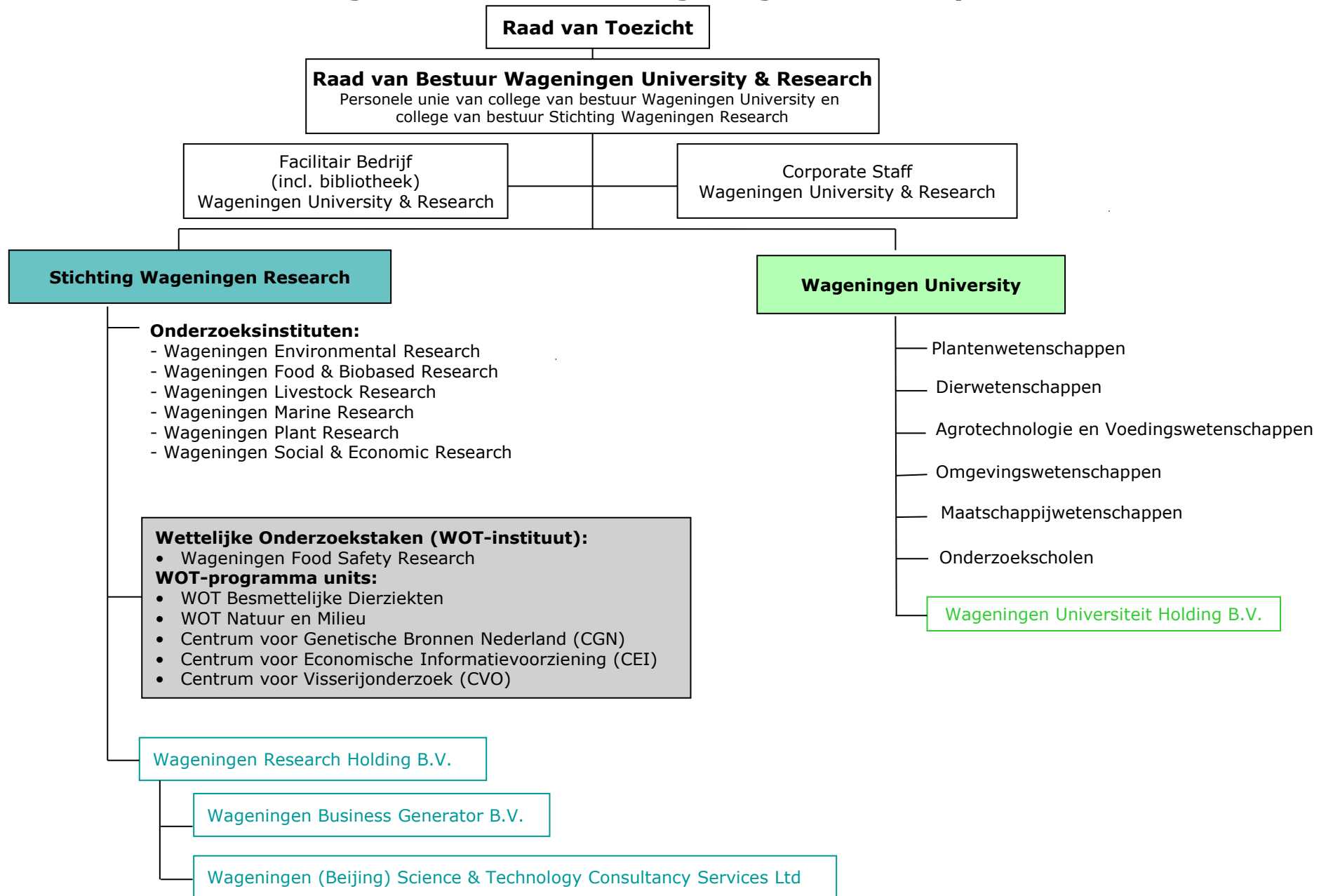


# Juridische- en organisatiestructuur Wageningen University & Research



**Raad van Bestuur Wageningen University & Research**  
 Personele unie Colleges van Bestuur:  
 Wageningen University en Stichting Wageningen Research

**Sciences Groups Wageningen University & Research**

|                                      | <b>Plant Sciences Group</b>   | <b>Animal Sciences Group</b>   | <b>Agrotechnology &amp; Food Sciences Group</b>   | <b>Environmental Sciences Group</b>   | <b>Social Sciences Group</b>  |  |
|--------------------------------------|---|--|---|---|---|--|
| <b>Wageningen University</b>         | <ul style="list-style-type: none"> <li>Plantenwetenschappen</li> </ul>      | <ul style="list-style-type: none"> <li>Dierwetenschappen</li> </ul>  | <ul style="list-style-type: none"> <li>Agrotechnologie en Voedingwetenschappen</li> </ul> | <ul style="list-style-type: none"> <li>Omgevingswetenschappen</li> </ul>            | <ul style="list-style-type: none"> <li>Maatschappijwetenschappen</li> </ul>                 | <ul style="list-style-type: none"> <li>Wageningen Universiteit Holding B.V.</li> </ul> |
| <b>Stichting Wageningen Research</b> | <ul style="list-style-type: none"> <li>Wageningen Plant Research</li> </ul> | <ul style="list-style-type: none"> <li>Wageningen Livestock Research</li> <li>Wageningen Bioveterinary Research</li> <li>Wageningen Marine Research</li> </ul> | <ul style="list-style-type: none"> <li>Wageningen Food &amp; Biobased Research</li> </ul> | <ul style="list-style-type: none"> <li>Wageningen Environmental Research</li> </ul> | <ul style="list-style-type: none"> <li>Wageningen Social &amp; Economic Research</li> </ul> | <ul style="list-style-type: none"> <li>Wageningen Research Holding B.V.</li> </ul>     |

## Deelnemingen en betrokkenheid bij overige rechtspersonen

| Rechtspersoon                        | Deelname in   | Percentage |
|--------------------------------------|---|------------|
| Stichting Wageningen Research        | Wageningen Research Holding B.V.  | 100%       |
| Wageningen Research Holding B.V.     | Wageningen Business Generator B.V.                                      | 100%       |
|                                      | Wageningen (Beijing) Science & Technology Consulting Services Ltd.      | 100%       |
| Wageningen Business Generator B.V.   | Exploitatiemaatschappij Windmolenparken Lelystad (EWL) B.V.             | 100%       |
|                                      | Windmolenpark Mammoethocht B.V.   | 100%       |
|                                      | Windmolenpark Neushoorntocht B.V.                                       | 100%       |
|                                      | Isolife B.V.  | 5%         |
|                                      | Fresh Forward Holding B.V.  | 49%        |
|                                      | 100% participation in Fresh Forward Breeding B.V.                       |            |
|                                      | 100% participation in Fresh Forward Marketing B.V.                      |            |
|                                      | Innovation Industries Fund Coöperatief U.A.                             | 1,87%      |
|                                      | Innovation Industries Fund II Coöperatief U.A.                          | 0,08%      |
|                                      | SHIFT Invest I Dutch Greentech Fund B.V.                                | 4,76%      |
|                                      | SHIFT Invest II coöperatief U.A.  | 2,60%      |
|                                      | SHIFT Invest III coöperatief U.A.                                       | 1,20%      |
|                                      | Future Food Fund II Coöperatief U.A.                                    | 1,26%      |
| Wageningen University                | Wageningen Universiteit Holding B.V.                                    | 100%       |
| Wageningen Universiteit Holding B.V. | Green Dino B.V.   | 11,40%     |
|                                      | Ceradis B.V.  | 1,40%      |
|                                      | The Akkermansia Company S.A.  | 3,70%      |
|                                      | Caribou Biosciences Inc. (Delaware)                                     | 0,12%      |
|                                      | Rival Foods B.V.  | 3,60%      |
|                                      | Scope Biosciences Holding B.V.  | 10%        |
|                                      | Innovation Industries Fund Coöperatief U.A.                             | 0,13%      |
| overige betrokkenheid                | Stichting Welcome Center Food Valley                                    |            |
|                                      | Innovation Industries Fund Coöperatief U.A.                             |            |
|                                      | Innovation Industries Fund II Coöperatief U.A.                          |            |
|                                      | SHIFT Invest coöperatief U.A.   |            |
|                                      | SHIFT Invest III coöperatief U.A.                                       |            |
|                                      | Stichting ISRIC   |            |
|                                      | Amsterdam Institute for Advanced Metropolitan Solutions (AMS Institute) |            |
|                                      | Stichting Akkerweb  |            |