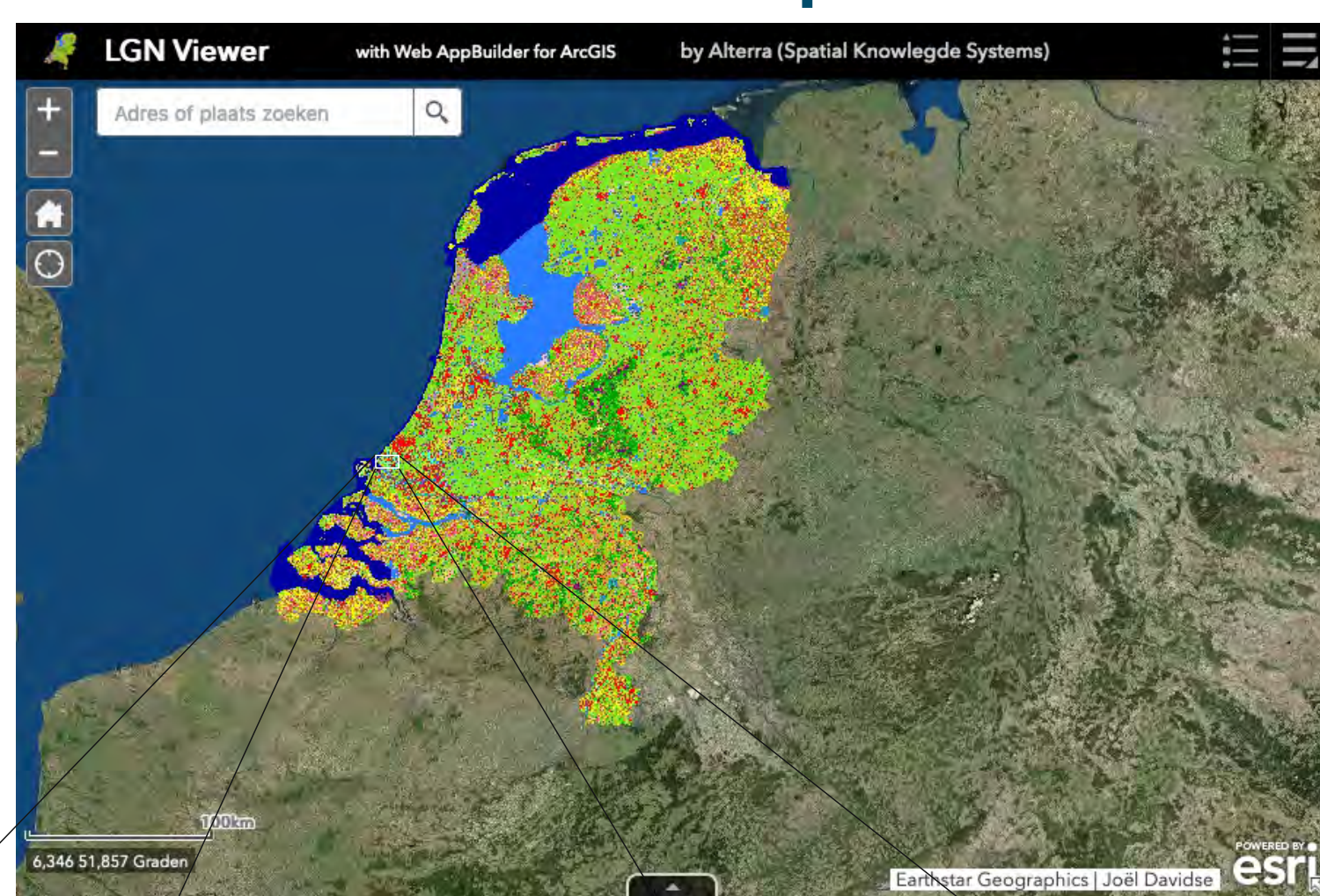


Land cover and land use map of the Netherlands for environmental policy and research (LGN)

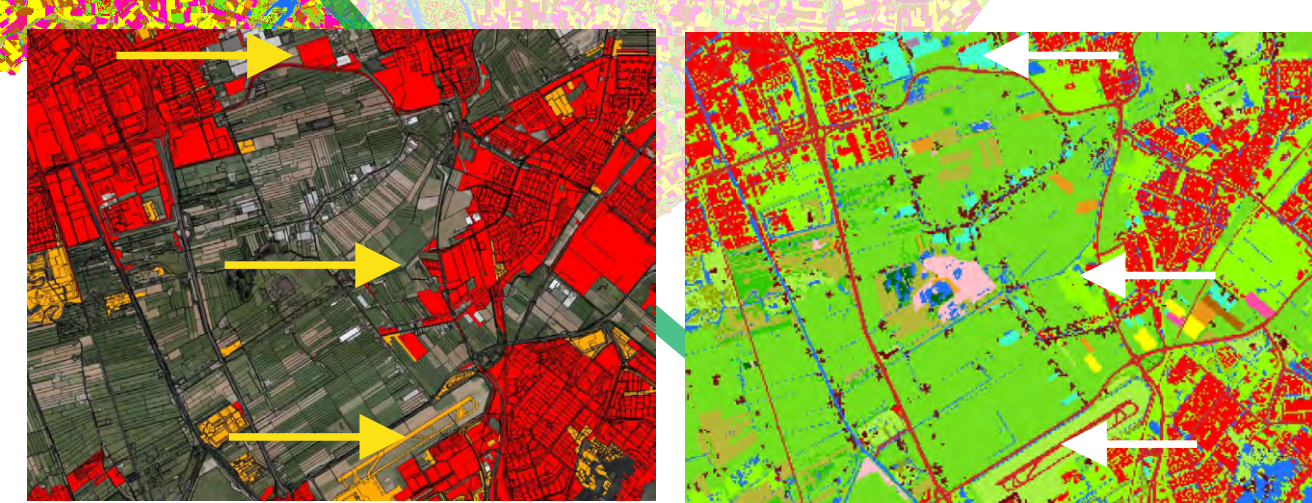
Input sources

- Topography (BRT)
- Base map statistical land use (BBG)
- Land parcel Information System (BRP)
- Physic Geographic Regions (FGR)
- Base data Nature Management NL (IMNAB)
- Base Map Nature NL (BKN)
- eLand use monitoring database NL (LGN7MON)
- aSntinel 2
- Green monitor (Groenmonitor)
- Base Elevation data NL (Lidar: AHN2/AHN3)
- Aerial photographs (LuFo)
- Object Hight Map NL (OHN)

Web map viewer



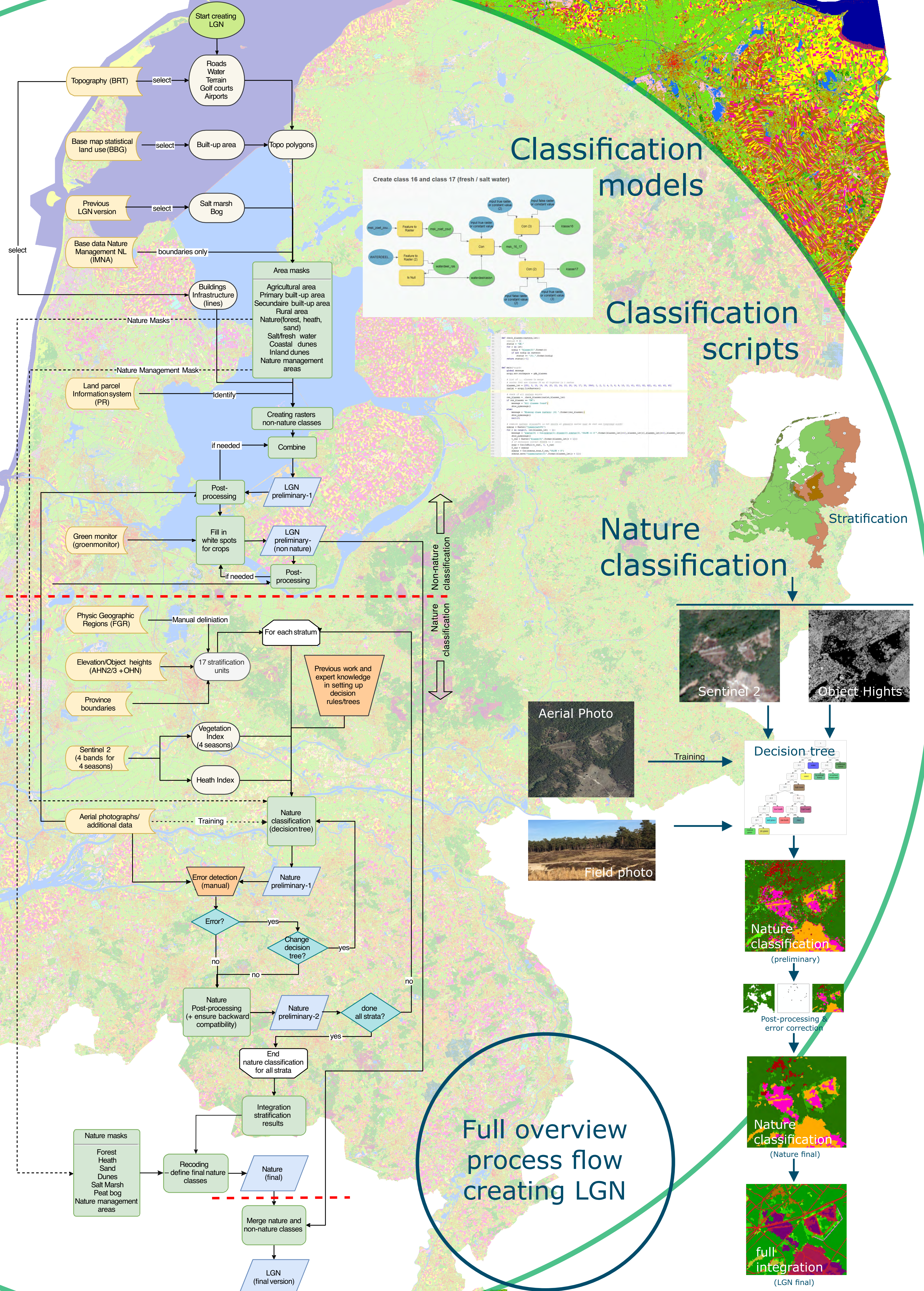
Detail



Post processing

Legend

- | | | | | | |
|--|--|--|---|---|---|
| <p>Nature (Classification code)</p> <ul style="list-style-type: none"> Salt marshes (30) Coastal sands (31) Dune areas with low vegetation (32) Dune areas with high vegetation (33) Heathland in coastal areas (34) Drifting sands/river sandbanks (35) Heathland (36) Grassy heathland (37) Very grassy heathland (38) Raised bogs (39) Forest in raised bogs (40) Other swamp vegetation (41) Reeds (42) Forest in swamp areas (43) Natural grasslands (45) Grasses in coastal areas (46) Other grasses (47) Bush/shrub vegetation in raised bogs (321/331) Bush/shrub vegetation in swamp areas (322/332) Other bush/shrub vegetation (323/333) | <p>Agricultural</p> <ul style="list-style-type: none"> Pasture (1) Maize (2) Potatoes (3) Sugar beet (4) Cereals (5) Other agricultural crops (6) Greenhouses (8) Orchards (9) Flower bulbs (10) Build-up areas outside of urban areas (26) Other land use in agricultural areas (27) Tree nurseries (61) Fruit cultivation (62) | <p>Forest</p> <ul style="list-style-type: none"> Deciduous forest (11) Coniferous forest (12) | <p>Built-up area</p> <ul style="list-style-type: none"> Urban built-up areas (18) Semi-urban built-up areas (19) Forest in built-up areas (20) Forest in semi built-up areas (22) Grass in built-up areas (23) Bare soil in built-up areas (24) Grass in semi built-up areas (28) | <p>Water</p> <ul style="list-style-type: none"> Fresh water (16) Salt water (17) | <p>Infrastructure</p> <ul style="list-style-type: none"> Main roads and railways (25) |
|--|--|--|---|---|---|



One of the most important changes at the Earth's surface concerns land cover and land use. Knowledge about the location and type of these changes is essential for environmental modeling and management. Remote sensing data in combination with additional spatial data from base reference data sets are recognized as an important source of information to detect these land cover and land use changes. The Land Use Database of the Netherlands (LGN database) maps the entire country and is based on satellite imagery and additional data. The LGN database divides land use up in to forty-two classes. The classification is based on use for environmental issues with an emphasis on agricultural use and nature management. The file has been updated every 3-5 years since 1986.

Authors:

Gerard Hazeu, Rini Schuiling, Marian Vittek
Jandirk Bulens, Igor Staritsky

jandirk.bulens@wur.nl; gerard.hazeu@wur.nl

Made by
Wageningen Environmental Research
Droevendaalsesteeg 3
6708 PB Wageningen
the Netherlands

To explore
the potential
of nature to
improve the
quality of life