



INTERNATIONAL STUDENT HANDBOOK

Contents

Introduction to Kasetsart University	1
Kasetsart Symbol	2
General Information about ISC	3
ISC Contact Information	4
Our Campus	5
Transportation to KU	8
KU Shuttle Bus Service	12
Visa Information	13
Processing for Visa Extension	20
Information for Scholarship Holders (Full Degree Student)	21
Undergraduate Student Uniform	22
Graduate Student Uniform	24
Accommodations (on campus)	26
Food Center/ Canteens	27
Office of the University Library	28

Contents

Health Insurance	-----	29
KU Infirmary	-----	30
Hospitals nearby the Campus	-----	31
Sports Center	-----	32
Banks on Campus	-----	33
Computer Services	-----	34
KU Post Office	-----	35
Security Concerns	-----	36
Useful Phone Numbers	-----	37
Using a Mobile Phone in Thailand	-----	38
International Activities	-----	39
Dos and Don'ts in Thailand	-----	40
Thai Language	-----	41

Introduction to Kasetsart University

History of the University

Kasetsart University (Thai: มหาวิทยาลัยเกษตรศาสตร์ or Maha Witthayalai Kasetsart) is one of the top-ranked public universities in Thailand. It was the first agricultural university and the third oldest university in Thailand. Kasetsart University was established on February 2, 1943, with the primary aim to promote subjects related to agricultural science. Today, Kasetsart University has revised and expanded its curricula and now has comprehensive coverage of degree programs in business, sciences, arts, social sciences, economics, humanities, education, engineering, veterinary sciences, and architecture. Recently, the university is undertaking to include medicine and health science. Kasetsart University has four campuses throughout Thailand, but its main flagship campus is at Bang Khen, Bangkok. The combined campus enrollment is greater than 70,000, which means it is the largest public university in Thailand.

The three founders

1. Luang Ingkhasikasikan
2. Luang Suwan Vajokkasikij
3. Phra Chuangkasetsinlapakan





Kasetsart Symbol



Kasetsart University's symbol is **Phra Phirun (Varuna)**, god of rain, mounted on a Naga (giant, 7-head serpent) encircled by lotus petals and the words "**Kasetsart University B.E. 2486**".

The university's color is **Green**.

The university's tree. Their Majesties the King and Queen planted nine **Nonsri Trees** in front of the university. In honor of this historic event, this beautiful flowering tree has become an important symbol of Kasetsart University.



General Information about ISC

Mission

To encourage and promote academic excellence of Kasetsart University at the international level.

Vision

The International Studies Center is a coordinating unit that encourages, supports and implements activities related to international education at Kasetsart University in order to develop and leverage academic excellence and to support Kasetsart's position as an internationally recognized and respected world university.

Objectives

- To be a comprehensive support center that promotes the internationalization of the curriculum at Kasetsart University.
- To support initiatives that enhance the university's international reputation and broadens its accreditation.
- To support, counsel, advise, and facilitate international students who participate in the university's academic programs, and to provide cross-cultural activities and programs that expand visitors' awareness of Thailand and its rich culture.
- To develop cooperative academic networks with local and international institutions, including training and exchange programs which will strengthen the university's international academic mission.
- To locate sources of funds and scholarship to expand international educational opportunities.
- To encourage cooperative and reciprocal programs open to Kasetsart faculty, academic staff, lecturers, students, and support staff with international institutions.
- To enhance Kasetsart University's role as a regional leader in academic excellence, supporting the National goals and policies which establish Thailand as the educational hub of Asia.

ISC Contact Information



ISC Facebook QRcode

Office Service Hours: 09:00 - 15:30

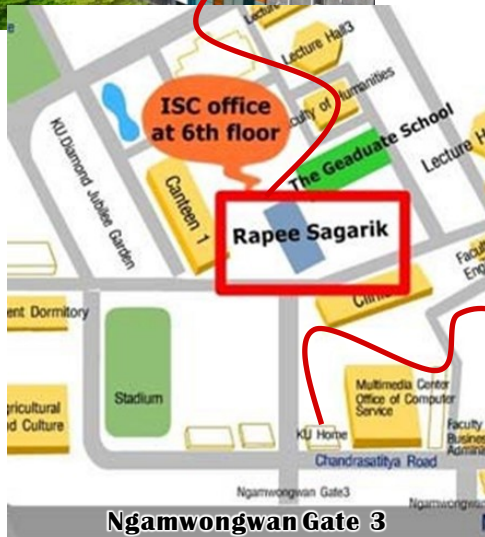
Contact Information

Tel/Fax : 02-562-0985 / 087-590-5918

Email: ku.oip@ku.ac.th / iscregistrarku@gmail.com

Website: <http://www.interprogram.ku.ac.th/newsite>

 <https://www.facebook.com/isc.ku>



**KU Home
Hotel**

Address	Post Address
International Studies Center, Kasetsart University	International Studies Center, Kasetsart University
50 Ngamwongwan Road, Chatuchak, Bangkok, 10900 Thailand	P.O. Box 1097 Bangkok, Chatuchak, 10903 Thailand

Location: International Studies Center

Office of the Educational Administration

Rapee Sagarik Building 6th floor

Our Campus



Bangkhen Campus (Bangkok)

Bangkhen Campus (Bangkok) is the original and main campus of the university. It is situated on 846 rai (135 hectares) in the lower part of the northern zone of Bangkok, approximately 6 kilometers south of Don Mueang International Airport. At present, 15 faculties, 6 offices, 6 institutes and the Graduate School of the university operate at this campus with a total student population of approximately 40,000. The current faculties include: Agriculture, Agro-Industry, Architecture, Business Administration, Economics, Education, Engineering, Environment, Fisheries, Forestry, Humanities, Science, Social Sciences, Veterinary Medicine and Veterinary Technology. The headquarters of all colleges, institutes, centers and offices of the university are located on this campus.



Our Campus

Kamphaeng Saen Campus (Nakhon-Pathom province)

In 1965, M.L. Xujati Kambhu, the University President at that time, perceived that the existing area at Bangkhen was not adequate to support the needed educational expansion. The University Council decided that Kamphaeng Saen District was the most appropriate site for several reasons. First, it was only 80 kilometres from Bangkok and 30 kilometres from central Nakhon Pathom Province. Second, the soil was fertile, suitable for cultivation, and the water needed for crops and crop sciences could be channeled from the Meaklong River into the irrigation canal that ran from the Vajiralongkorn Dam in Kanchanaburi to the Campus. The Council then presented the University Master Plan to the Cabinet, including a recommendation to purchase and develop the land. Shortly after, Kasetsart University bought 7,951 rai of land.

On 12 November 1979, Kamphaeng Saen Campus started teaching and learning activities by moving the third and fourth-year students enrolled in the Faculty of Agriculture and agriculture related programs from Bangkhen to Kamphaeng Saen. Starting in 1990, Kamphaeng Saen Campus offered classes to undergraduate and graduate students, primarily in Agriculture and related disciplines. The beautiful, green Kamphaeng Saen Campus has become popular and attract many international students who come for a full degree or to participate in a short-term visitor program.



Our Campus



Sri Racha Campus (Chon Buri province)

This campus occupies 199 rai (32 hectares) in Si Racha District of Chon Buri Province, approximately 107 kilometers east of Bangkok. Since 1954, it had been an agricultural research station of the university. It was established as a full-fledged KU campus in 1989. The campus was created to address a pressing National need for high quality, educated workforce, in part to meet the demands resulting from development taking place on the Eastern region of Thailand, such as the Eastern Seaboard Development Project.

Sri Racha Campus offers degree courses and short-term training programs in four faculties: Management Sciences, Engineering at Si Racha, Economics at Si Racha, and International Maritime College. The campus also provides Master's degree programs in Business Economics, Agribusiness, Industrial Administration and Development, and other ever expanding areas responding to the needs of the region.

Transportation to KU

From the Suvarnabhumi Airport to Kasetsart University

Airport Public Taxi Service

Registered taxis are available at the platform outside of the main passenger terminal, Floor 1 . Follow the signs to the taxi queue and obtain a ticket at the automated taxi counter. The number on your ticket corresponds to a taxi waiting to assist you. An airport registration fee of 50 THB will be charged to you in addition to the normal taxi fare.

It usually takes 45 - 90 minutes from the Suvarnabhumi Airport (BKK) to Kasetsart University, depending on the traffic. The optional toll way is often much faster but adds 100 to 150 THB to your costs, depending on the route. The passenger pays express way tolls. The total taxi fee to KU should be about 500 to 600 THB, depending on the traffic

Airport Rail Link

You can take the Airport Rail Link (City Line) from the Suvarnabhumi Airport (BKK) Station, located on the Basement Level of the Passenger Terminal. Take the Airport Link to the Phaya Thai Station, then change to the elevated BTS PhayaThai Skytrain Station. The BTS is a separately ticketed journey. Take the BTS north to the Kasetsart University BTS Station. Information on the public sky train and railway services is found here:

- <http://www.srtet.co.th/en/index.html#>
- <http://www.bts.co.th/customer/en/main.aspx>



Transportation to KU

From Don Muang Airport

Follow the directional signs to the Public Taxi.

There is a queue and the attendant will direct you to a taxi as your number is called. The taxi fare shown on the meter will calculate distance and time, but you will need to pay an additional Airport Taxi Fee, 50 THB. You do not need to use an Expressway to get to KU Campus; if the taxi uses the tollway, you will save time, but you need to pay the toll. It normally takes about 30 minutes from the Don Muang Airport to KU, and it normally costs approximately 150 to 200 THB, depending on traffic.



All Buses that pass KU

- Phaholyothin Gate: 26, 34, 39, 51, 59, 114, 126, 107, 129, 503, 522, 524
- Ngamwongwan Gate: 24, 51, 63, 104, 114, 177, 206, 522, 545
- Vibhavadi Rangsit Gate: 29, 52, 504, 510, 555



Thai Language Map Information (For Taxi driver)



มหาวิทยาลัยเกษตรศาสตร์
(Kasetsart University)
อาคารระพี สาคริก,
สำนักบริหารการศึกษ,
ฝ่ายการศึกษานานาชาติ ชั้น 6
Rapee Sagarik Building,
Office of Educational Administration,
International Studies Center,
6th floor
(ตรงข้ามโรงอาหารคณะ
วิศวกรรมศาสตร์)
Opposite
Faculty of Engineering
Canteen
โทร 02-562-0985
Tel 02-562-0985

= พื้นที่จอดรถ
จำนวนรถ...คัน

KU Shuttle Bus service

Free shuttles (trams and buses) are divided into numbers: Bus 1, 2, 3, 4 and 5. Each bus number goes along different routes inside the campus, but normally stops nearby the main gates (Phahonyothin Gate, Ngamwongwan Gate, and Vibhavadi Gate).

Check with the driver or students on board to determine whether the bus goes nearby your destination.



Mobile Application

For iOS



Download on the
App Store

Visa Information

**For any questions about your visa
please contact the ISC office**

**** 1 month BEFORE the Visa expires ****



NOTICE
TO NOTIFY OF STAYING LONGER THAN 90 DAYS

The Alien permitted to stay longer in the kingdom must notify your place of residence to the immigration office every 90 days.

In case of application for extension of temporary stay in the kingdom by TM.7 you have notified your place of residence at the first time.

Any Alien who fails to comply with will be punished with a fine not exceeding 5,000.-Baht and with an Additional fine not exceeding 200.-Baht passes until the law is

2013

First 90 days report appointment

IMMIGRATION ACT B.E.2522

Date launching 1st visa extension on 9 JUL 2013

Immigration officer 10 APR 2013

10

THI THUC VISAS

VIETNAM - IMMIGRATION 241A 2 9 MAY 2013 NỘI DAI

VIETNAM - IMMIGRATION 066A 2 4 JAN 2014 NỘI DAI

Expired date 26 AUG 2013

New visa after extension 26 AUG 2014
Maximum 1 year valid

Arrival date 29 MAY 2013

Date launching visa extension 14 AUG 2013

visa type E9

TO KEEP YOUR STAY PERMIT RE-ENTRY PERMIT MUST BE MADE BEFORE LEAVING THAILAND

NOTIFICATION OF RESIDENCE MUST APPEAR EVERY 90 DAYS.

10

THI THUC VISAS

VIETNAM - IMMIGRATION 241A 2 9 MAY 2013 NỘI DAI

VIETNAM - IMMIGRATION 066A 2 4 JAN 2014 NỘI DAI

Arrival date 29 MAY 2013

Expired date 26 AUG 2013

visa type E9

Visa Extension for Full Degree Students (Non - ED)

Status	Documents Required	Fee	Fines	Remarks
First Year Student	<ol style="list-style-type: none"> 1. Immigration Form No. 7 (Visa Extension Form) Student must get this letter from ISC before contacting the Immigration Bureau 2. Copy of Passport/pages relevant to Thailand 3. Copy of Departure Card (TM.6) 4. One Photo/ 4 cm x 6 cm size 5. Fee 1,900 baht/pay at Immigration Bureau 6. Transcript of Record /from Office of the Registrar 7. Copy of Student Card 8. Current KU1 (Registration Form) 9. Receipt or Invoice/ showing Tuition and Fee payment 10. Letter of Acceptance from KU 	1,900 THB/ year	<p>For students who fail to extend Visa</p> <p>500 THB/day</p>	<ol style="list-style-type: none"> 1. Student can extend Visa - Maximum 1 year 2. Student must make a report to the Immigration Bureau each 90 days after receiving the ED - Visa 3. After you get your ED - Visa, if you depart Thailand and return, make sure the immigration officer uses the correct STAMP: ED

Visa Extension for Full Degree Students (Non - ED)

Status	Documents Required	Fee	Fines	Remarks
After Your First Year	<ol style="list-style-type: none"> 1. Immigration Form No. 7 (Visa Extension Form) Student must get this letter from ISC before contacting the Immigration Bureau 2. Copy of Passport/pages relevant to Thailand 3. Copy of Departure Card (TM.6) 4. One Photo/ 4 cm x 6 cm size 5. Fee 1,900 baht/pay at Immigration Bureau 6. Transcript of Record /from Office of the Registrar 7. Copy of Student Card 8. Current KU1 (Registration Form) 9. Receipt or Invoice/ showing Tuition and Fee payment 10. Letter of Acceptance from KU 	1,900 THB/ year	<p>For students who fail to extend Visa</p> <p>500 THB/day</p>	<ol style="list-style-type: none"> 1. Student can extend Visa - Maximum 1 year 2. Student must make a report to the Immigration Bureau each 90 days after receiving the ED - Visa 3. After you get your ED - Visa, if you depart Thailand and return, make sure the immigration officer uses the correct STAMP: ED

Visa Extension for Exchange Students (ED)

* Often the first ED Visa given to Exchange Students is valid for only 90 days. If your initial Visa does not cover the entire duration of your studies, you must get a Visa Extension. Students attending a short term study program may not need an ED-VISA consult the ISC Office.

Status	Documents Required	Fee	Fines	Remarks
One Semester or One Year Exchange	<ol style="list-style-type: none"> 1. Immigration Form No. 7 (Visa Extension Form) <li style="text-align: center;">Student must get this letter from ISC before contacting the Immigration Bureau 2. Copy of Passport/pages relevant to Thailand 3. Copy of Departure Card (TM.6) 4. One Photo/ 4 cm x 6 cm size 5. Fee 1,900 baht/pay at Immigration Bureau 6. Transcript of Record /from Office of the Registrar 7. Copy of Student Card 8. Current KU1 (Registration Form) 9. Receipt or Invoice/ showing Tuition and Fee payment 10. Letter of Acceptance from KU 	1,900 THB each time	<p>For students who fail to extend Visa</p> <p>500 THB/day</p>	<ol style="list-style-type: none"> 1. Student must make a report to the Immigration Bureau each 90 days after receiving the ED - Visa 2. After you get your ED - Visa, if you depart Thailand and return, make sure the immigration officer uses the correct STAMP: ED 3. If you do not plan to travel outside of Thailand, you still must make a report to the immigration bureau each 90days. 4. If you plan to travel outside of Thailand one time, you can apply for a re - entry permit. You must apply before you depart, or you will invalidate date your ED - Visa. 5. If you plan to travel more than once outside of Thailand, you can obtain a multiple entry visa from the Immigration Bureau. You must obtain the multiple entry visa before you depart, or you will invalidate your ED - Visa.

90 days Report for Full Degree and Exchange Student

Status	Documents Required	Fee	Fines	Remarks
First Year Student	<ol style="list-style-type: none"> 1. Immigration Form No. 47 (90 day Report Form) 2. Passport 3. Appointment Slip 4. Departure Card (TM.6) 	None	<ol style="list-style-type: none"> 1. If student fails to Report on time, pay directly to Immigration Bureau 2,000 THB / time 2. If you are arrested by Police 5,000 THB / time 	<ol style="list-style-type: none"> 1. Student must make a report to the Immigration Bureau each 90 days after receiving the ED-Visa 2. There are two ways to make the mandatory 90 days report. You can go to the Immigration Bureau, file Form No.47 before the first 90 days of your stay expires. <ol style="list-style-type: none"> 2A. 90 days is not the same as 3 months, it is 90 calendar days. 2B. You can file 15 days prior before the appointment date. 2C. You can file within 7 days after the appointment date. 3. Or, if you have a valid Re-entry Visa the 90 days report is filed automatically when you arrive at a major port of the airport or border. 90 days begin again from the arrival date stamped in your passport.

Re - Entry Permit

Status	Documents Required	Fee	Fines	Remarks
	1. Re - entry Form TM.8 (Apply for Re-Entry Permission) 2. Photocopy of Passport <ul style="list-style-type: none"> • Photo Page • Current Visa Page 3. Copy of Departure Card (TM.6) 4. One Photo/ 4 x 6 cm	Single Entry 1,000 THB/ Pay Once Multiple Re-entry 3,800 THB/ Pay Once	None	If you plan to travel outside Thailand one time, a single re-entry permit is Thailand sufficient. If you plan to travel out of Thailand more than once, you should get a multiple re-entry permit.

Tourist Visa – Must Change to ED - Visa

Status	Documents Required	Fee	Fines	Remarks
All Students	If you first enter with a tourist Visa, the documents required depends on the rules pertaining to student's home country	2,000 THB/Once	<p>Student must have a proper Education Visa to study/ remain in Thailand.</p> <p>Students who enter on a Tourist Visa must change to an ED Visa or depart Thailand.</p>	<p>Student who does not have an Education (ED) Visa:</p> <p>When applying for the ED Visa, the student must have at least 15 days remaining on the Tourist Visa. (To calculate the time you need, include several days to get proper documentation from ISC and KU generally 3 weeks.</p>

Process for Visa Extension

Visa Extension for Student (ED)

Cases	Process
All Students	<p>Student must contact ISC at least one month before the date stamped upon entry into Thailand expires. The student can obtain the proper Visa Application Form from ISC.</p> <p>Student must complete that form and return to ISC together with a photocopy of all pages of your passport and the required documents.</p>

Information for Scholarship Holder (Full Degree Student)

**** Please expect at least 1 month after you submit required documents for finances to be processed ****

ISC will coordinate interactions between some scholarship sponsors: such as SEARCA, TICA, AUN-SEED and student scholarship holder, including tuition and fee invoicing, payment and disbursements. Documents required for disbursement appears on the back of ISC's General Request Form, see below:

Document Items	Research Budget	Thesis Printing	Book Allowance	Visa Reimbursement
General Request Form	✓	✓	✓	✓
Receipt Form	✓	✓	✓	
Power of Attorney Form	✓			
Request Letter from Advisor	✓			
Copy of Student ID Card	✓	✓	✓	✓
Copy of Bank Book (first page)	✓	✓	✓	✓
Copy of Current Registration Form	✓	✓	✓	✓
Thesis Proposal	✓			
Approved Proposal		✓		
Receipt of Visa Extension				✓

Undergraduate Student Uniform

Undergraduate students (full degree and exchange students) are required to wear the KU Uniform during class, examinations, and to all official events and university-sponsored activities. You are requested to wear the KU Uniform starting with Orientation, so students should plan to arrive in advance and purchase the uniform before Orientation Day. Students attending a short term study program may not need to wear a uniform, but please dress modestly and professionally.

Uniforms for Male Students

				
<p>Necktie</p>	<p>Belt & Buckle</p>	<p>White Shirt with Long Sleeves</p>	<p>White shirt with Short Sleeves</p>	<p>Long Pants (Black)</p>



Undergraduate Student Uniform

Uniforms for Female Students

				
<p>Pin</p>	<p>White Shirt</p>	<p>Black Skirt</p>	<p>Buttons</p>	<p>Belt & Buckle</p>



Graduate Student Dress Code

Graduate degree students and students attending short term study program do not need to wear a uniform, but please dress modestly and professionally when you come to the university, attend classes, or participate in University-sponsored events.

* Sleeveless tops, short pants, and short skirts are inappropriate when you come to the university.

Uniforms for Male Students

Male Student: Proper attire means slacks (not jeans), professional shirt with collar, and necktie.



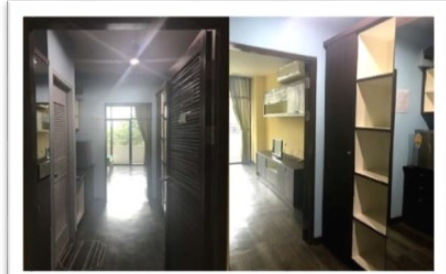
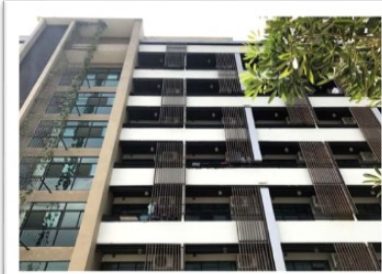
Graduate Student Dress Code

Uniforms for Female Students

Female Student: Proper attire means long skirts or pants (no jeans or tank top) and professional blouse/shirt with collar.



Krissana International Dormitory (On Campus)



Accommodation fee/month	Facilities	
<p>Monthly Rental 6,000 THB/Month</p> <ul style="list-style-type: none"> • Deposit and Damage Insurance • Water bill charge 16 THB/Unit • Electricity bill charge 5 THB/Unit • Key card fee 100 THB/Unit • Bed sheet rental fee 150 THB/Unit <p>Daily Rental (KU student) 600 THB/Day</p>	<ul style="list-style-type: none"> • Bed • Chair • Desk • Refrigerator • Closet • 24 hr. security system • Lounge area with local satellite TV 	<ul style="list-style-type: none"> • Air conditioner • Clothes line • Washing machine • Internet Wi-Fi • Study room and meeting room • Shared kitchen • Bicycle rental service

Food Centers / Canteens (Suggestions)

Central Food Court (Bar Mai)

- provides ready-made and cooked to order food, and has a small grocery stores, with parking area.
- Location: Nearby Chulabhorn Walailak Swimming Pool.



Food Court 2 (Bar Mai Gwa)

- provides ready-made and cooked to order food, and has small grocery stores, with a parking area.
- Location: Near the Faculty of Agro-Industry



Canteen at the Faculty of Engineering Building 17

- Location: 1st Floor Faculty of Engineering Building 17

Canteens at Faculty of Science, Engineering, Forestry, Business Administration, etc.

- provide ready-made and cooked to order food.
- Locations: Food Centers are located in several faculties Such as the Faculty of Science, Faculty of Engineering, Faculty of Business Administration, Faculty of Forestry, and others.

Kasetsart University Library



Contact Information

- <http://www.lib.ku.ac.th>
- Tel 02-942-8616
- Fax 02-940-5834
- Email libku@ku.ac.th

Location

Nearby the Faculty of Agriculture

Kasetsart University Library aims to be Kasetsart University's Knowledge Centre, as well as the country's Digital Library with distinction for research materials about agriculture. The Green Library focuses on energy saving and environmental conservation.

1. Self-Checkout Machine Service
2. Laptop Loan Service
3. Self/Group Study Room Service
4. Information Literacy Service
5. Research Square – reading area for study and research
6. Research Information Service
7. Delivery Service – book delivery as requested by faculty members/ researchers/ visiting academicians
8. International Buffalo Information Centre (IBIC)
9. Thai National AGRIS Centre
10. Video on Demand Service
11. Language Learning Room Service
12. Theater/ Mini Theater Room Service
13. Garden Library Service
14. Eco - Library: Library for Life and the Environment

Health Insurance



International students must have health insurance covering the duration of their study period. If an international student does not have sufficient health insurance coverage, the students must buy a health insurance plan. Contact ISC Office upon arrival. The KU approved health plan costs 8,500 THB/year. Payment can be made by transfer to the designated bank account. Please email: ku.oip@ku.ac.th

****If you do not have the health insurance,
you should know
that you will risk paying a lot of money
in case of accidents or sickness****

For more information Bangkok

- Aetna Head Office (Sathorn Square Office Tower)
Tel: 02 677 0000
- Aetna Kaset-Nawamin
Tel: 02 019 6099
- Aetna Sukhumvit 101 (101 True Digital Park)
Tel: 02 822 1018
- Aetna Ratchapruerk
Tel: 02 101 5445
- Aetna Ladprao
Tel: 02 938 5454

You can
purchase
aetna health
insurance by
yourself



sites.google.com/ku.th/isc/health-insurance-visa

- Room & Board 1,200 THB / day
- Hospital expenses / disability 20,000 THB
- Surgical fee/ disability (per schedule) 25,000 THB
- Physician's hospital visit / day 500 THB
- Emergency OPD included in (B) Hospital Service/ disability Outpatient 5,000 THB
- Maximum limit/visit 1,000 THB
- Personal Accident 100,000 THB

Updated: December 2019

KU Infirmary



INFirmary
Kasetsart
University

(สถานพยาบาล, sa - tan - pa - ya - bhan)

Hours / Official date and times

Morning Queuing at 8.30-11.30 Diagnose from 9.00 to 12.00

Afternoon Queuing at 12.45-15.00 Diagnose from 13.00 to 15.30

(Diagnosis priority for KU student starts at 13.00, others start at 13:30)

* Evening Queuing at 16.00 onward

Tel. 02-579-0030 ext 114 / KU 1281-2 ext 114

** Present your Student ID Card and Passport to the Infirmary staff



Hospitals nearby KU Campus



Vibhavadi Hospital

(โรงพยาบาลวิภาวดี)

Vibhavadi Hospital is a private tertiary acute care hospital providing a wide range of medical and surgical services. Vibhavadi Hospital boasts over twenty years of experience in hospital health care, serving over 20,000 inpatients and 300,000 outpatients a year. The closest branch is located at the corner of Ngam Wong Wan Road and Vibhavadi Road. About 15-minute walk from KU Campus.



- Vibhavadi Hospital, 51/3 Ngamwongwan Road, Chatujak Bangkok Thailand 10900 , Thailand
- Tel: +66(0)2-561-1111 Fax: (66)2-561-1466
- Website: https://www.vibhavadi.com/en_home

KU Sports Center



Kasetsart University Sports Office promotes and enhances mass sports development in order to encourage and support university students, university personnel, and the public to excellence in fitness and competitive sporting events.

Website <http://www.sp.ku.ac.th/>

Tel. 02 942-8772 -3

Email kugscp@ku.ac.th



Tennis Court

Badminton Court Fees

Chulabhorn Walailak Swimming Pools

KU Health Fitness Center

Please present your Student ID Card

**Fees and charges are subject to change, Please visit the website for more information

Banks on Campus



Bank of Ayuthaya Co. Ltd.

Kasetsart University Branch is locating on the First Floor of the commercial building nearby Gate1 Ngamwongwan Rd.

Office Hours: 08:30 - 15:30

Monday - Friday

Closed on weekends and holidays

Tel: 0 2561 3490-1



Siam Commercial Bank (Thai Pha Nit Bank)

Kasetsart University Branch is locating on the First Floor of the Ngamwongwan Parking Building 1 on, nearby Gate 1 on Ngamwongwan Rd.

Office Hours: 08:30 - 15:30

Monday - Friday

Closed on weekends and holidays

Tel: 0 2561 3495 - 6



Bangkok Bank

Kasetsart University Branch is locating on the First Floor of Ngamwongwan Parking Building 2 on Chandrasatitya Rd., nearby Gate 1 on Ngamwongwan Rd.

Office Hours: 08:30 - 15:30

Monday - Friday

Closed on weekends and holidays

Tel: 0 2579 9782/0 2579 9851-2



The Thai Military Bank Ltd.

Kasetsart University Branch is locating on the 1st floor of the Ngamwongwan Parking building 2 on Chandrasatitya Rd., near Gate 1 on Ngamwongwan Rd.

Office Hours: 08:30 - 15:30

Monday - Friday

Closed on weekends and holidays

Tel: 0 2579 9782/0 2579 9851-2



Government Saving Bank (Orm Sin Bank)

Kasetsart University Branch is locating on Pahon Yothin Rd., in front of Kasetsart University.

Office Hours: 08:30 a.m. - 3:30 p.m.

Monday - Friday

Close on weekends and holidays

Tel: 0 2562 0716, 0 2579 7556



Krung Thai Bank PLC. (KTB)

Kasetsart University Branch is locating in Ngamwongwan Parking Building 2 on Chandrasatitya Rd..

Office Hours: 08:30 a.m. - 4:30 p.m.

Monday - Friday

Close on weekends and holidays

Contact numbers: 0 2579 9810-11



Documents for open account: 1. Letter of Acceptance (LOA), 2. Passport and 3. Student ID Card

Office of Computer Services (OCS)



Office Hours

Office

Monday to Friday 08:30 - 16:30

Helpdesk

Tel: 02 - 562 - 0951 - 7 // 622543

Location: Second Floor

Monday to Friday 08:30 - 20:30

Not closed at lunch time

Saturday 08:30 - 16:30

Closed at lunch time

Kasetsart IT Square – KITS.

Monday to Friday 8:30 - 20:30

Saturday 08.30 - 16:30

Not closed at lunch time

Kasetsart IT Square (KITS) at 2nd floor OCS building (New Building).

Service

- Computer and internet services
- Printing service with B/W, scanner service
- Sub-meeting or seminar room for KU's students and staff



QRcode Website: <https://ocs.ku.ac.th>

KU Post Office

KU Post Office provides mail, remittance, and international phone call services.

Open 08:30 - 16:30 on weekdays

(closed official holidays)

Location: Opposite KU Infirmary



Service EMS World

Terms and conditions

1. Maximum weight: 30 kg.
2. The service is suitable for senders who need time - guaranteed delivery.
3. EMS World Delivery Standards

ASIA Delivery Standard 1 to 3 days

AFRICA Delivery Standard 2 to 4 days

EUROPE Delivery Standard 1 to 3 days

AMERICA Delivery Standard 2 to 5 days

Contact and Information

50 Moo 3 Kasetsart University,

Phahonyothin Road, Ladyao,

Chatuchak, Bangkok

Tel: 02-579-8534 ,02-579-8535

Email: contact@thailandpost.co.th

Service Information:

Hot Line: 1545 or Tel: 0 2831 3600

Email: postalcare@thailandpost.co.th

Security Concerns



- Please provide emergency contact information (family or other authorized contact) / home university.
- Let us know your Thai telephone number / email address.
- Keep a copy of your passport with you at all times.
- Keep KU Student ID Card and Insurance Card with you at all times.
- Keep your room and valuables secure.
- Go out in pairs or as a group, especially at night.
- Exercise caution and good judgment.
- Stay alert.





Useful Phone Numbers



Ambulance and Rescue	1554
Bangkok Metropolitan Administration	1555
Crime	1195
Department of Disaster Prevention and Mitigation	1784
Emergency Hospital & Healthy	1719
Highway Police	1193
Immigration Department (www.immigration.go.th)	02-287-3101
Medical Emergency Call	1669
National Disaster Warning Centre	1860
Police (General Emergency Call)	191
SOS (Police And Fire Department)	199
Taxi Services Center	1681, 1661, 1668, 1545
Tourist Assistance	1337 ext 9
Tourist Police Division	02-308-0333
International Studies Center, Kasetsart University	02-562-0985, 087-590-5918
KU Emergency (Security)	02-5526-2579-0

Useful Phone Numbers

There are three mobile phone companies which operate actively in Thailand.

You can purchase a local SIM Card and prepaid phone cards for air time in the arrival hall at the international airports or at many retail phone shops located throughout the city. You will need your Passport. You can top-up prepaid phone cards at many convenience store as well as at the retail phone outlet. If you are a long term resident with a Retirement visa or a work permit you can obtain a service plan and be billed monthly.



Website: www.ais.co.th

AIS call Center: 1175



Website: truemoveh.truecorp.co.th

True call Center: 1242



Website: www.dtac.co.th

DTAC call Center: 1678

International Activities

KU International Sports Day



Bangkok Trip



KU International Food Fair



Dos and Don'ts in Thailand



When you visit temples and religious sites, show respect, and dress modestly. Never touch a temple statue or image.



“Sawasdee” is a greeting with hospitality, showing the politeness and friendliness of Thais.



Hugging and kissing in public places is considered impolite in Thai society.



Buddhist monks are highly revered by Thais. Women must not touch them or their yellow robes since it is forbidden by religious rules.

Please dress modestly in government offices and religious places.



In Thailand, one's head is the most respected part of the body - the foot is less respected. Do not show the bottom of your feet.



You must show respect for the King and Royal Family.



**Alcohol is not allowed
KU Campus**



It is polite to slightly bend down when you walk in front of someone who is seated, and do not walk across anyone.



Revealing dresses/topless on the beach or in public places is very impolite (illegal for women).

Thai language

No.	Thai	Karaoke/ Pronunciation	English
1	มหาวิทยาลัยเกษตรศาสตร์	Ma-ha-vid-tha-ya-lai-ka-set-saad	Kasetsart University
2	คณะเกษตร	Ka- na- ka- set	Faculty of Agriculture
3	คณะเศรษฐศาสตร์	Ka-na – sed-ta-saad	Faculty of Economics
4	คณะบริหารธุรกิจ	Ka-na-bor-ri-harn-tuu-ra-kid	Faculty of Business Administration
5	คณะสถาปัตยกรรมศาสตร์	Ka-na-sa –tha –pad-tha-ya-kum-saad	Faculty of Architecture
6	คณะประมง	Ka-na-pra-mong	Faculty of Fisheries
7	คณะสังคมศาสตร์	Ka-na-sung-khom-saad	Faculty of Social Science
8	คณะมนุษยศาสตร์	Ka-na-ma-nud-sard	Faculty of Humanities
9	คณะสัตวแพทยศาสตร์	Ka-na-sad-ta-wa-pad-saad	Faculty of Veterinary Medicine
10	คณะวนศาสตร์	Ka-na-wa-na-sard	Faculty of Forestry
11	คณะอุตสาหกรรมเกษตร	Ka-na-au-sa-ha-kum-ka-set	Faculty of Agro-Industry
12	คณะวิทยาศาสตร์	Ka-na-vid-tha-ya –saad	Faculty of Science
13	คณะเทคนิคการสัตวแพทย์	Ka-na- technique-sad-tha-wa-pad	Faculty Veterinary Technology
14	คณะวิศวกรรมศาสตร์	Ka-na-vid-sa-wa-kum -sard	Faculty of Engineering
15	คณะสิ่งแวดล้อม	Ka –na-sing-wad-lorm	College of environment
16	คณะศึกษาศาสตร์	Ka – na –suuk-sa-sard	Faculty of Education

17	บัณฑิตวิทยาลัย	Ban - Dit - Vidha - Ya - Lai	Graduate School
18	โรงอาหาร	Rong - Ar - Haan	Canteen
19	สำนักกีฬา	Sam- Nak - Kee - Lha	Sport Center
20	สนามบาสเก็ตบอล	Sa - Nam - Basketball	Basketball Court
21	สนามเทนนิส	Sa - Nam - Tennis	Tennis Court
22	สระว่ายน้ำ	Sa - Wai - Nham	Swimming Pool
23	ยิม	Yhim	Gymnasium / Fitness Center
24	ธนาคาร	Dha - Na - Kan	Bank
25	ห้องน้ำ	Hong - Nam	Restroom / Toilet
26	อาคาร	Ar - Kan	Building
27	โรงพยาบาล	Rong - Bhaya - Baan	Hospital
28	คลินิก	Clinic	Clinic
29	ประตูงามวงศ์วาน 1	Pra-tuu-Ngam-wong-wan-nung	NgamWongWangate 1
30	ประตูงามวงศ์วาน 2	Pra-tuu-Ngam-wong-wan-song	NgamWongWangate 2
31	ประตูงามวงศ์วาน 3	Pra-tuu-Ngam-wong-wan-sam	NgamWongWangate 3
32	ประตูพหลโยธิน	Pra-tuu-pha-hon-yo-tin	Phaholyothin gate
33	ประตูวิภาวดีรังสิต	Pra-tuu-vi-pa-wa-dee-rang-sid	Vibhavadi rangsit gate

Thai language

Food		
ผม/ฉันเป็นมังสวิรัต	Pom/Chan-Pen-mang-sa-vi-rad	I'm a vegetarian.
ผม/ฉันไม่ทานเนื้อสัตว์	Pom/Chan-mai-taan-nua-saad	I don't eat meat .
ผม/ฉันทานอาหารอิสลาม	Pom/Chan-Taan-a-haan-is-lam	I only eat Halal food.
มีร้านอาหารอิสลามไหมคะ/ ครับ	Me-ran-a-haan-is-lam-mai-ka/krup	Do you have a Halal Restaurant?
ผม/ฉันไม่ทานเผ็ด	Pom/Chan mai-taan-ped	I don't eat spicy.
น้ำดื่ม	Nam - Deum	Drinking water

ก ข ช ค ฅ ฆ ง จ ฉ ช ซ ฌ
ญ ฎ ฏ ฐ ฑ ฒ ณ ด ต ถ ท
ธ น บ ป ผ ฝ พ ฟ ภ ม ย ร
ล ว ศ ษ ส ห พ อ ฮ