

# Tactical and operational planning of bio-based supply chains

Unlocking bottlenecks and incorporating social sustainability into circular  
systems

# Tactical and operational planning of bio-based supply chains

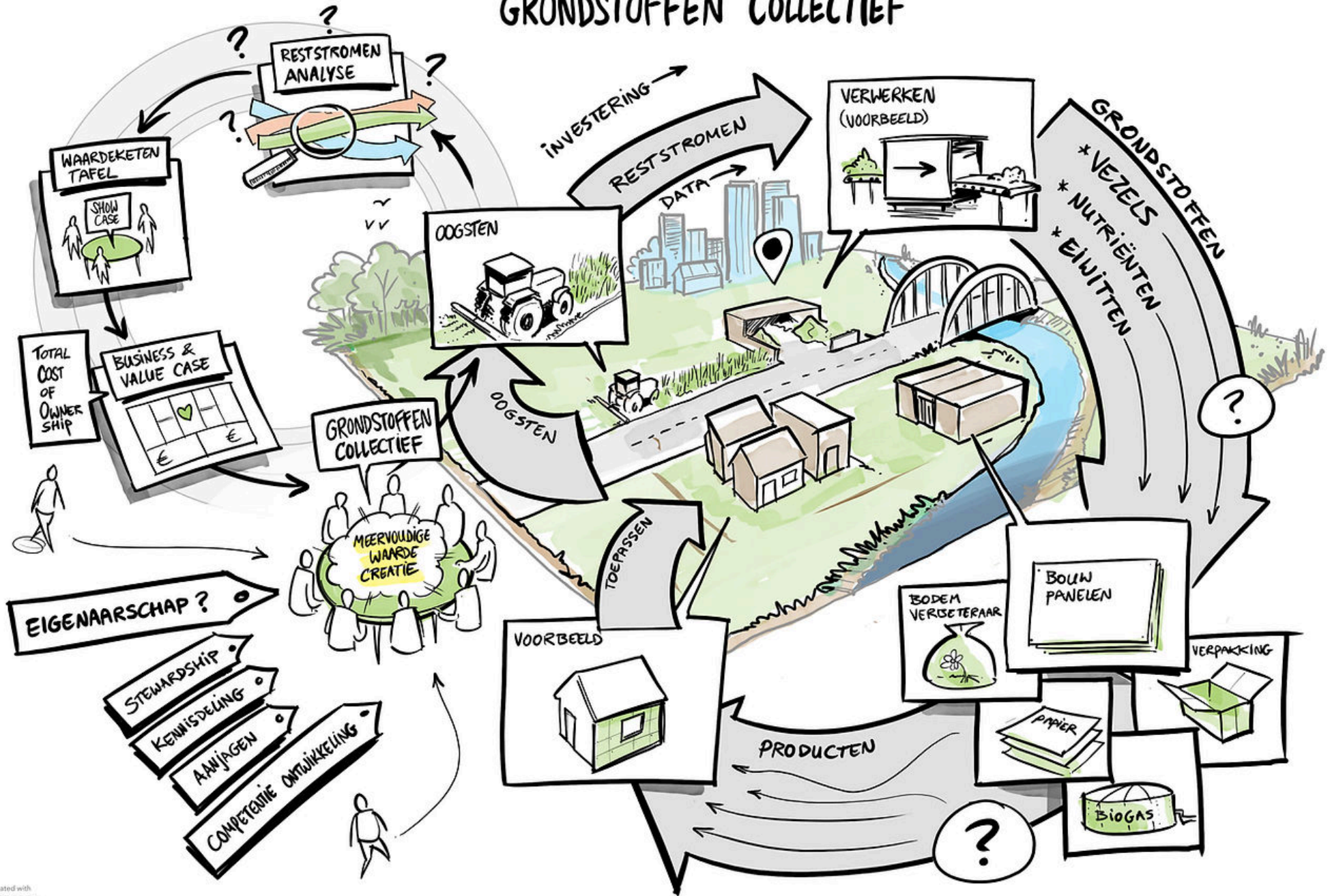
- ▶ Introduction Rawmaterials Collective Netherlands
- ▶ Development from innovation and transition to realization and upscaling
- ▶ Product development on the one hand and demand creation on the other







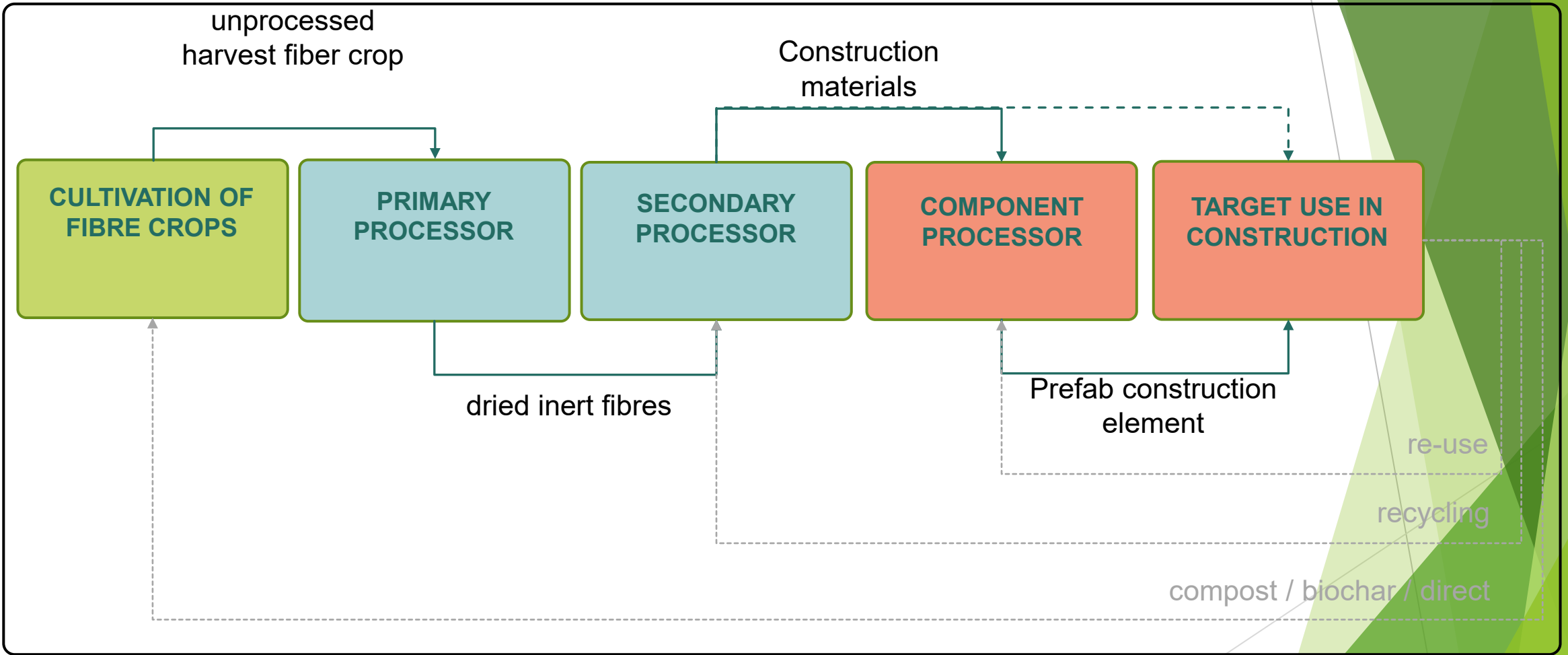
# GRONDSTOFFEN COLLECTIEF





# FROM COUNTRY TO PROPERTY





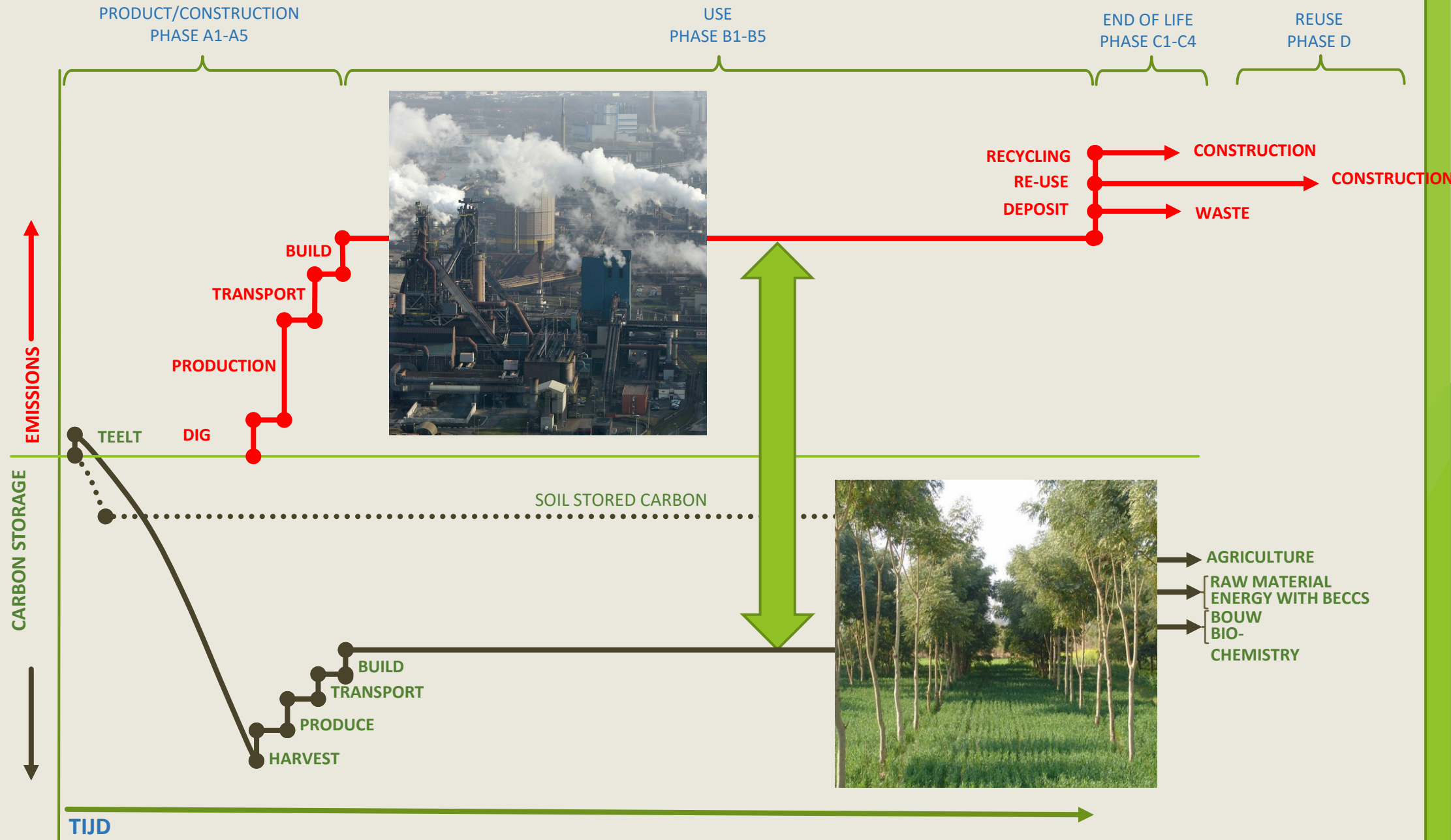


# Biobased Building

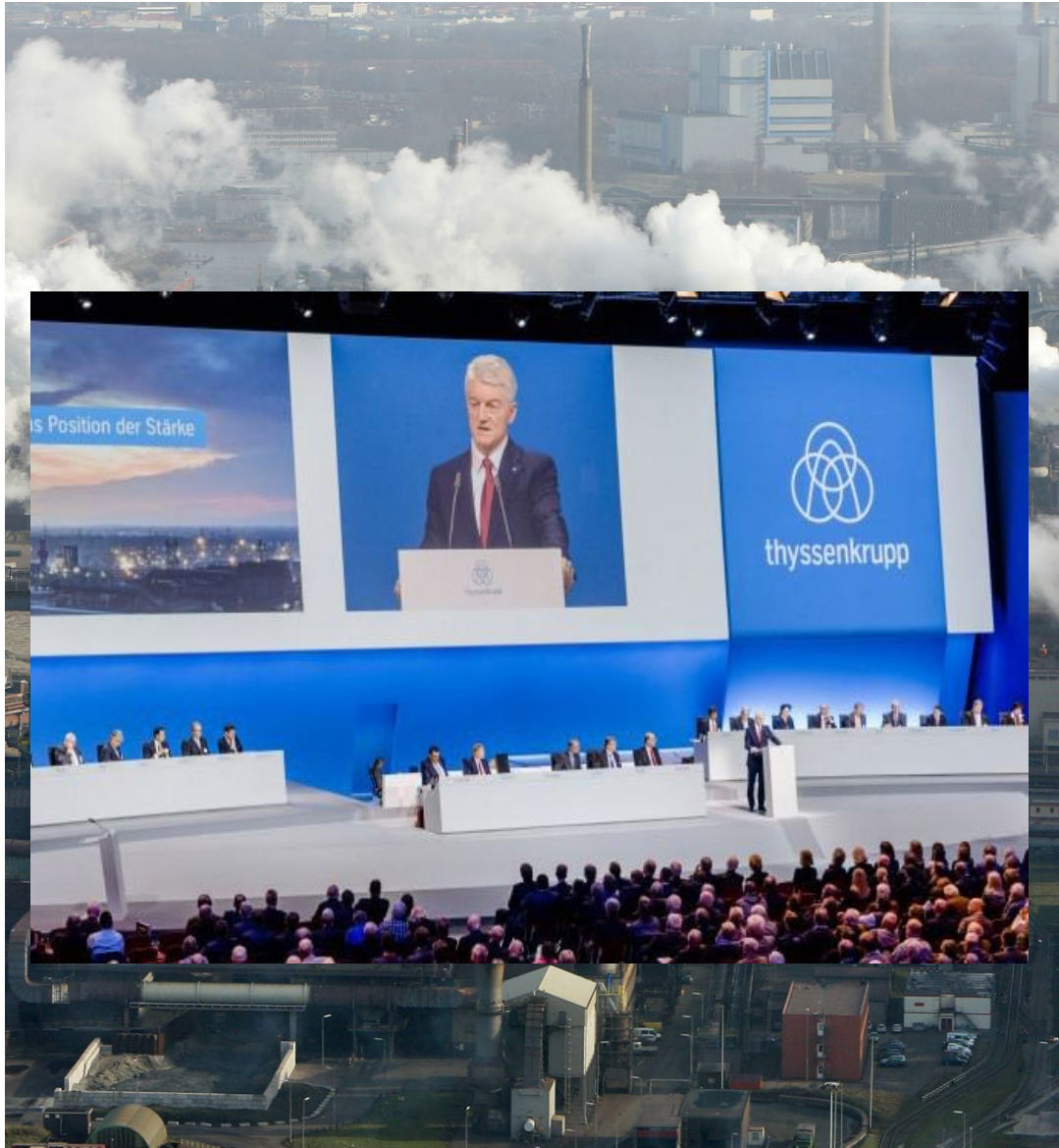
- ▶ Governance
- ▶ Setting up Supplychain
- ▶ Understanding and comprehension
- ▶ Technology and building concepts

**GRONDSTOFFEN  
COLLECTIEF  
NEDERLAND**











# Business Model

- ▶ Governance
- ▶ Processes
- ▶ Technology



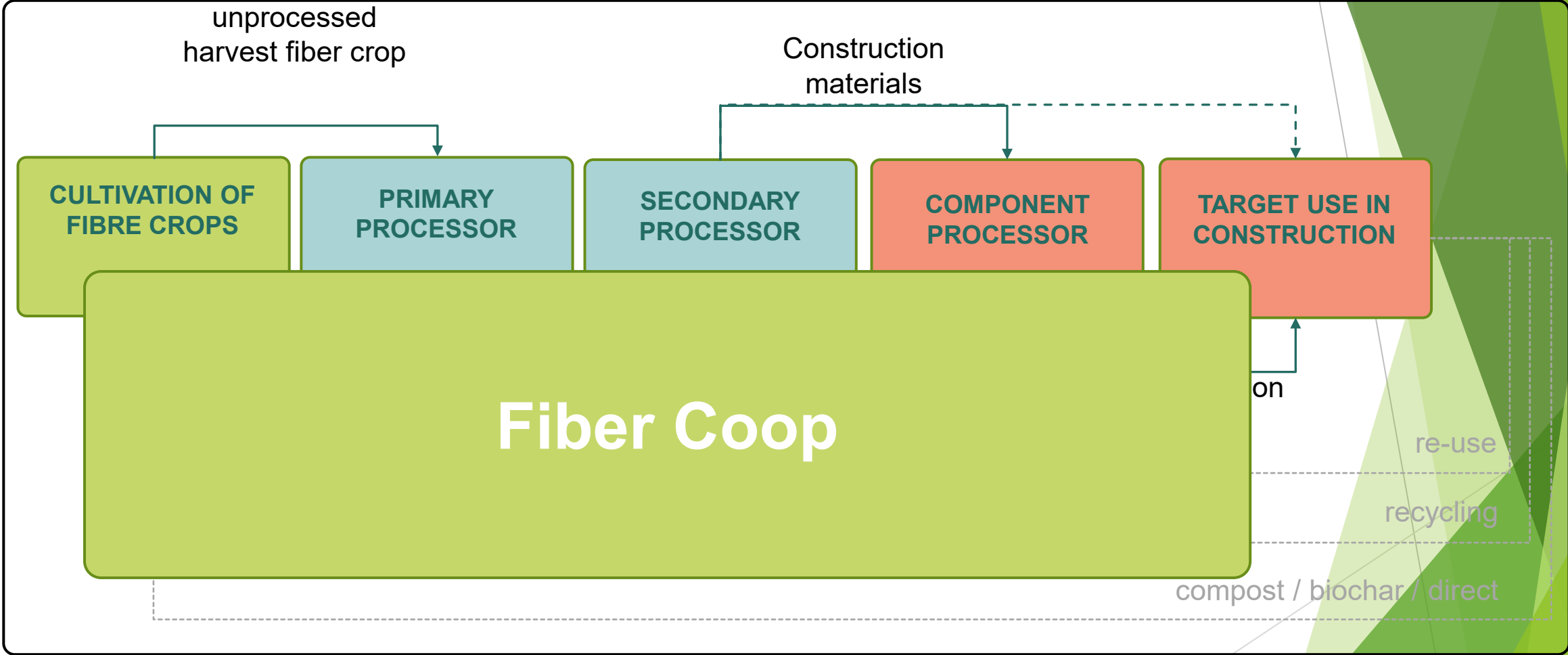
1 ton of CO<sub>2eq</sub>

=



1 carbon credit





# Best chains for the Achterhoek region

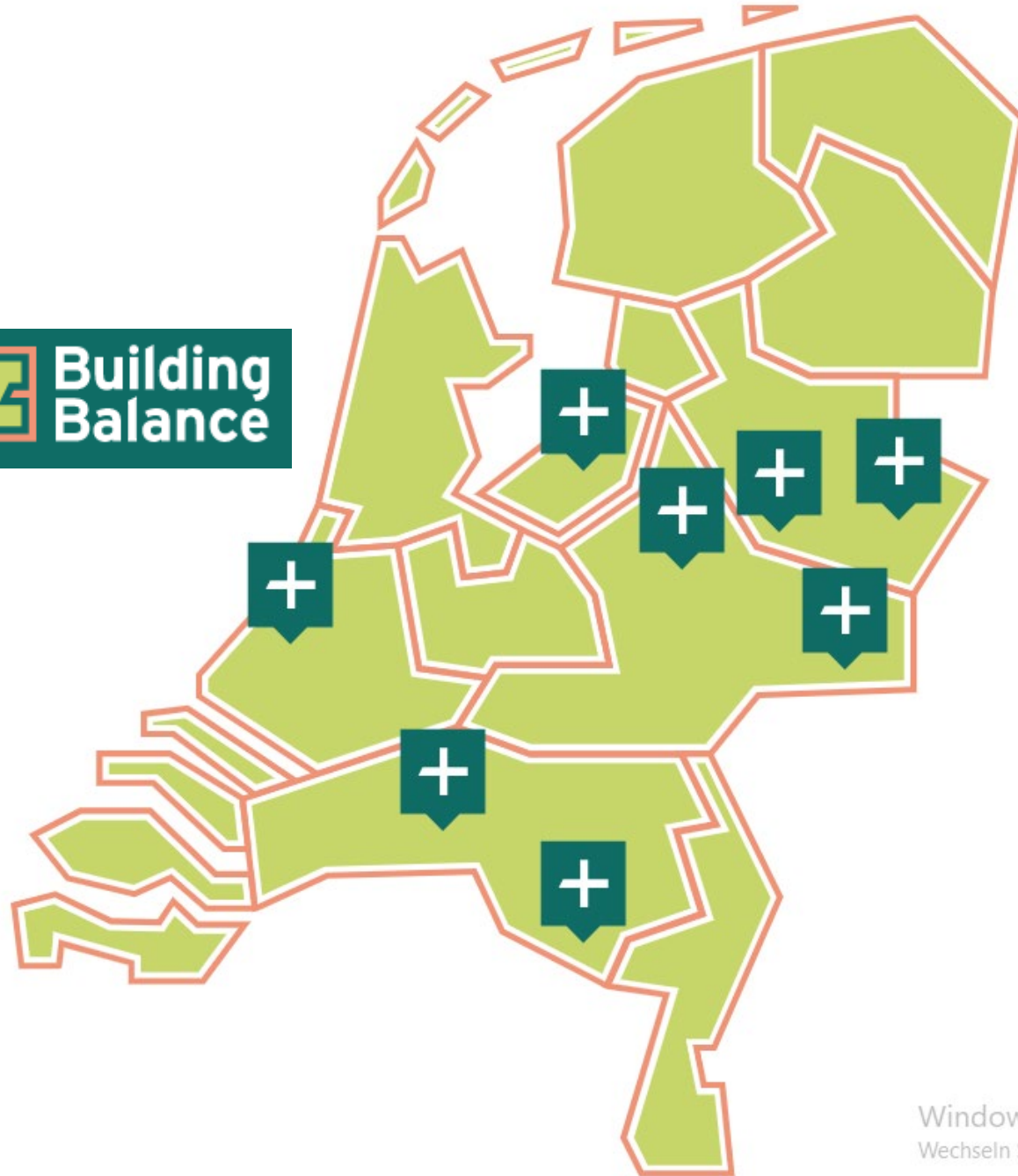
- Blowing hemp and miscanthus into roof structures, chopped from the land
- Strips: straw verbals for the development of prefabricated straw construction
- Application of biobased raw materials in building constructions
- A refinery chain: silphie, sorghum and roadside mulch







 **Building  
Balance**



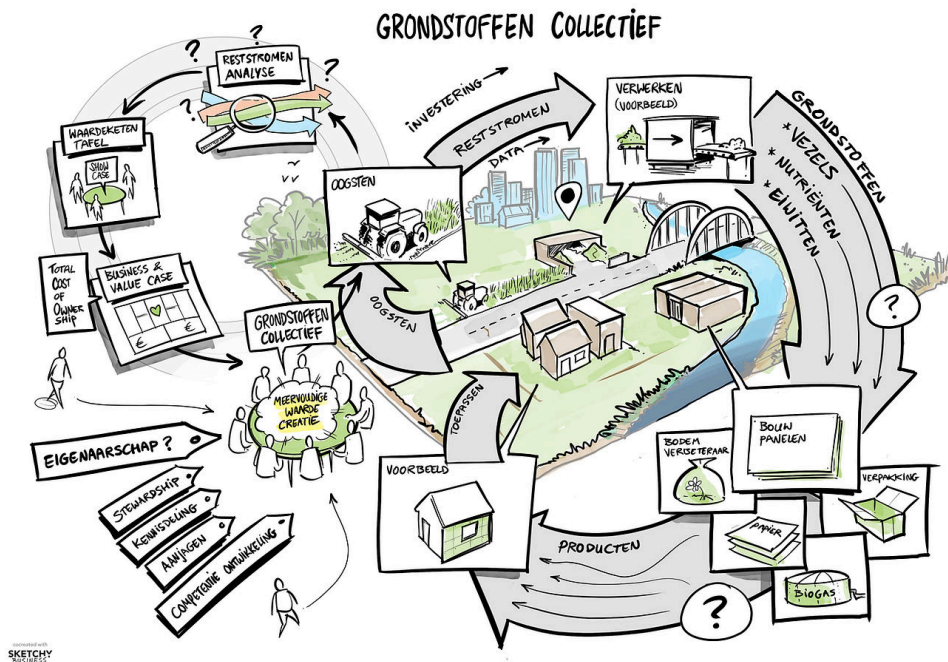
Windows a  
Wechseln Sie z

**SAMEN  
BI  
BASED  
BOUWEN**



# Tactical and operational planning of bio-based supply chains

- ▶ Introduction Rawmaterials Collective Netherlands
- ▶ Development from innovation and transition to realization and upscaling
- ▶ Product development on the one hand and demand creation on the other



Questions?

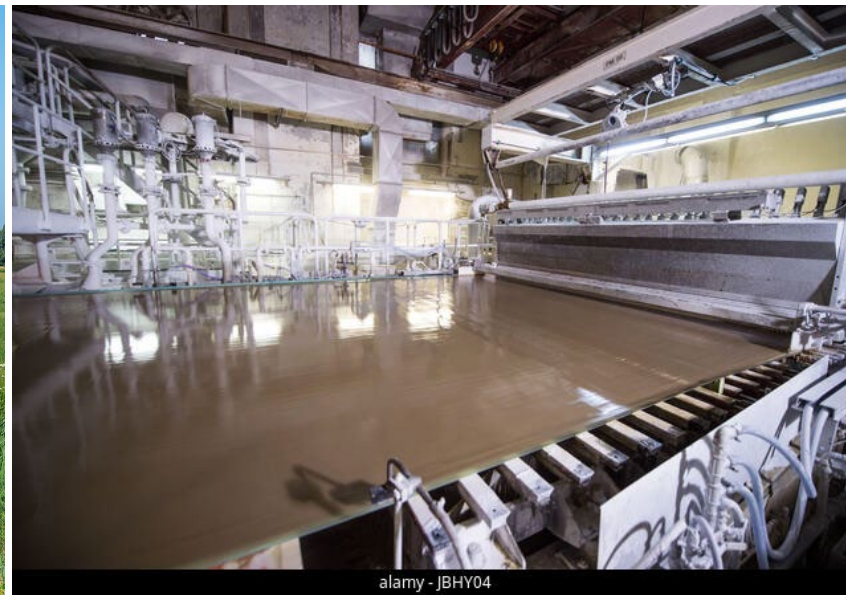
**Arne Eindhoven**

Steward Rawmaterials Collective Netherlands

[info@grondstoffencollectief.nl](mailto:info@grondstoffencollectief.nl)



# From Roadside to Page









# Conclusions

