

BSc thesis procedure and topics

at the Business Management & Organisation (BMO) Group

Jilde Garst - BMO thesis & internship coordinator (bmo014@wur.nl)

Willemien Nieuwstad - BMO thesis ring coordinator (thesisring.bmo@wur.nl)



Outline

- Thesis at BMO?
- Expertise at BMO
- BSc thesis procedure at BMO
- BMO supervisors and their favourite topics



Thesis at BMO?

If you are interested in...

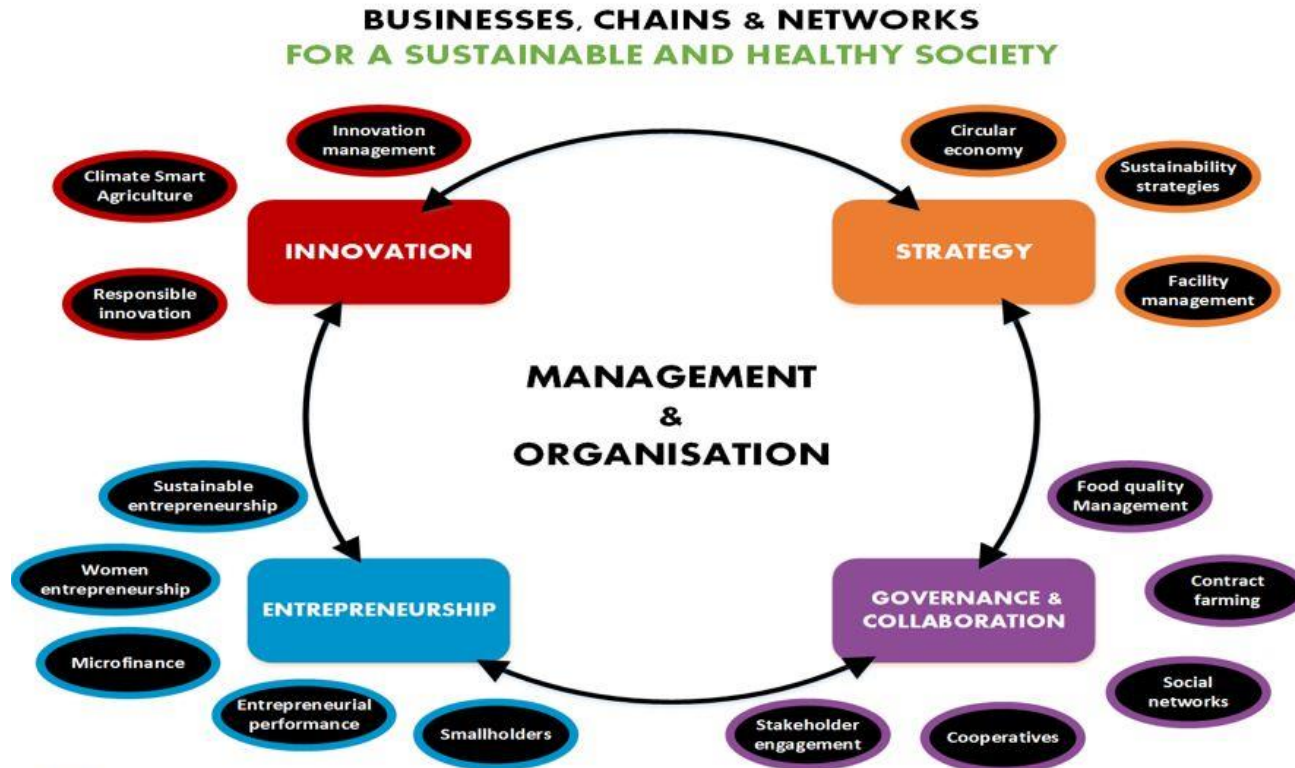
- Sustainability and Business Transformation
- Role and capabilities of managers and entrepreneurs
- Strategy and structure of a company
- Relationships between organizations in value chains, networks, and ecosystems
- Innovation and Entrepreneurship

Research methods used at BMO:

- Deductive, inductive, and abductive approaches
- Qualitative and quantitative methods



Expertise at BMO



BSc thesis procedure at BMO

Starting a BSc thesis at BMO:

1. Go to the BMO [thesis & internship](#) webpage (on the BMO website) and read the **BSc Thesis – Steps** document
2. Fill in the **BSc Thesis Orientation Form** and email it to the BMO office (office.bmo@wur.nl)
3. Thesis coordinator will contact you to confirm your thesis topic and to match you to a BMO supervisor
4. Follow the guidelines and requirements in the **BSc Thesis - Steps** document

STEPS BSc Thesis at BMO

	Preparation	Start of thesis	Finalizing thesis	Handing in thesis	Thesis defence
Student tasks	<ol style="list-style-type: none"> 1. Explore thesis topics 2. Ask study advisor to confirm to BMO Office that you fulfil the requirements 3. Fill in BSc Thesis Orientation Form & send to BMO Office 	<ol style="list-style-type: none"> 4. Set up first meeting with supervisor 5. Fill out BSc Thesis Contract and discuss with supervisor 6. Once approved by supervisor, send the BSc Thesis Contract to BMO Office 7. Attend your first thesis ring 	<ol style="list-style-type: none"> 8. Attend thesis rings 9. Ask supervisor for feedback on chapters 10. When approved by supervisor, upload draft thesis in Brightspace for similarity check 	<ol style="list-style-type: none"> 11. Agree with supervisor & examiner on date for defence 12. Upload final thesis in OSIRIS 13. Send BMO office a PDF version of final thesis 	<ol style="list-style-type: none"> 14. Prepare 15-minute presentation for defence 15. Try out your presentation & prepare your defence in thesis ring 16. Present and defend your thesis
BMO Staff	<p><i>Thesis coordinator contacts you to confirm thesis topic and matches you to supervisor</i></p> <p><i>Thesis ring coordinator sends you instructions for thesis ring participation</i></p>	<p><i>Supervisor approves Learning Agreement in Osiris</i></p>	<p><i>Supervisor & examiner review draft, provide feedback, & if sufficient, approve thesis for defence</i></p>	<p><i>BMO office sends you invitation for the defence and announces your defence on Brightspace</i></p>	<p><i>Supervisor & examiner(s) assess thesis and defence</i></p> <p><i>Final grade is communicated through OSIRIS</i></p>

Questions? Persons to contact:

BMO thesis & internship coordinator: Jilde Garst bmo014@wur.nl

BMO thesis ring coordinator: Willemien Nieuwstad thesising.bmo@wur.nl

BMO office: Anna Tran office.bmo@wur.nl

MSc thesis procedure at BMO

Starting a MSc thesis at BMO:

1. Go to the BMO [thesis & internship](#) webpage (on the BMO website) and read the **MSc Thesis – Steps** document
2. Fill in the **MSc Thesis Orientation Form** and email it to the BMO office (office.bmo@wur.nl)
3. Thesis coordinator will contact you to confirm your thesis topic and to match you to a BMO supervisor
4. Follow the guidelines and requirements in the **MSc Thesis - Steps** document

MSc Thesis - Steps

	BEFORE MONTH 1 Preparation	MONTH 1 Start of thesis	MONTH 3 Progress evaluation	MONTH 6 Finalizing thesis	MONTH 6 Handing in thesis	MONTH 6 Thesis defence
Student tasks	<ol style="list-style-type: none"> 1. Explore thesis topics 2. Ask study advisor to confirm that you fulfil the requirements 3. Fill in MSc thesis orientation form & send to BMO Office 	<ol style="list-style-type: none"> 4. Set up first meeting with supervisor 5. Fill in Learning Agreement and discuss with supervisor 6. Once approved by supervisor, upload Learning Agreement in OSIRIS 	<ol style="list-style-type: none"> 7. Consult your supervisor for a date for your progress evaluation 8. Send research proposal to supervisor 9. Defend proposal in progress evaluation meeting 	<ol style="list-style-type: none"> 10. Conduct research & present chapters in thesis ring 11. Ask supervisor for feedback on chapters 12. When approved by supervisor, upload draft thesis in Brightspace for similarity check 	<ol style="list-style-type: none"> 13. Agree with supervisor & examiner on date for defence 14. Upload final thesis in OSIRIS 15. Send BMO office the following documents: a) PDF version of final thesis, b) Data Management Form, & c) final data 	<ol style="list-style-type: none"> 16. Invite family and/or friends to defence 17. Prepare 15-minute presentation for defence 18. Try out your presentation & prepare your defence in thesis ring 19. Defend your thesis
BMO Staff	<p><i>Thesis coordinator contacts you to confirm thesis topic and matches you to supervisor</i></p> <p><i>Thesis ring coordinator sends you instructions for thesis ring participation</i></p>	<p><i>Supervisor approves Learning Agreement in OSIRIS</i></p>	<p><i>Supervisor & examiner review proposal, send feedback and if approved, sign progress evaluation</i></p>	<p><i>Supervisor & examiner review draft, provide feedback, & if sufficient, approve thesis for defence</i></p>	<p><i>BMO office sends you invitation for the defence</i></p> <p><i>Thesis ring coordinator announces your defence on Brightspace</i></p>	<p><i>Supervisor & examiner(s) assess thesis and defence</i></p> <p><i>Final grade is communicated through OSIRIS</i></p>

Questions? Persons to contact:

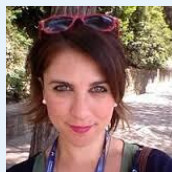
BMO thesis & internship coordinator: Jilde Garst bmo014@wur.nl

BMO thesis ring coordinator: Willemien Nieuwstad thesising.bmo@wur.nl

BMO office: Anna Tran office.bmo@wur.nl

Supervisors at BMO

Innovation & Entrepreneurship



Female entrepreneurship



New tech & digitalization

Facility management



Open & responsible innovation



Biobased & circular economy



Corporate sustainability



Strategic Management & Organisational Change

Supply Chain, Networks, & Collaboration



Cooperatives



Health care management



Food safety management



Supervisors at ELS



Organizational & entrepreneurial learning



Dr. Valentina C. Materia



Core Expertise:

Innovation and entrepreneurship

"Applying an institutional economics and business perspective, I am interested in understanding how (women led) agri-food businesses contribute to societal transitions towards sustainable food systems from an institutional, organizational, and entrepreneurial perspective."

Key research themes:

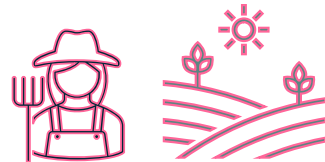
Dynamics and organization of innovation in agri-food supply chains;

Organizing value chains for sustainability;

Women-led innovation and entrepreneurship in agriculture and rural areas.

Examples of BSc and MSc topics

- Diversification of value chain arrangements for enhancing sustainability;
- Drivers and barriers for farmers to adopt more sustainable practices (e.g. regenerative practices; ecological intensification practices; etc.);
- Designing and scaling up new biodiversity-positive business models (e.g. for soil health; for protein transition);
- Potential of socio-ecological and technological innovation pathways to support adoption and diffusion of sustainable business models (e.g. enhancing soil health);
- Understanding gender norms, barriers and drivers to women-led innovations in farming and rural communities;
- Multidimensional performance of women entrepreneurs: theories and practices.



Dr. Jos Bijman



Core Expertise:

- 1. Collaboration in value chains and networks**
- 2. Cooperatives and producer organisations**

Key research themes:

- Sustainability / CSR strategies
- Internal governance
- Contracting

Examples of BSc and MSc topics

- New forms of business collaboration
- Sustainable business models
- Internationalization strategies in the food and feed industry
- Sustainability / CSR programs in the food industry
- Evolution of farmer organisations, cooperatives and producer organisations
- Inventory of cooperatives in Wageningen
- Collaboration among old and new cooperatives



Dr. Maria Carmela Annosi



Core Expertise:

Innovation Management and Organizational Behavior:

- Firms' capabilities and knowledge management
- Organizational strategic choices during the time of fundamental institutional transition
- Sources of individual actions in evolving institutional environment
- Emergence of practices particularly in the context of technology diffusion
- Organizational design

Examples of BSc and MSc topics

- **Sustainability:**

- What are the strategic implications of organizational actions with outcome trade-offs among or between social, financial, and environmental issues?
- Do social and environmental ratings impact organizational boundaries? If so, how and why?

- **Diffusion of Innovation :**

- Investigating the social agency-related dynamics and agents' roles in processes of scaling and diffusion, or the institutional frameworks conducive to scaling and diffusion of technological innovation.

- **Digitalization: The future of work and inclusive organizational behavior**

- What are the barriers or challenges to inclusive organizational behavior? How can organizations identify these and overcome them, especially in the digital workplace?
- Are some employees more inclusive than others? What impact does inclusiveness have on their emotions, attitudes, and behavior within digital workplace contexts?

Dr. Emiel Wubben



Core Expertise:

- Biobased and circular business
- Strategic Management
- New Business Models
- Internationalization of firms
- Vertical Farming / Stadslandbouw

Examples of BSc and MSc topics

- What new strategic or business model classification fit the set of pioneers of *Toekomstige voedselproductie, or toekomstboeren*?
- Advancing the business twin of vertical farming formats
- Climbing the Value Hill: New business development for better valorisation on waste streams
- Biobased business winners? Create an overview of biorefineries or biobased businesses worldwide.
- Changing the firm towards a circular economy; serious business or a marketing gimmick?
- From circular economy reports, what are the managerial hick-ups?

Prof. Dr. Wilfred Dolfsma



Core Expertise:

*"Cooperation between and within firms with a view to stimulating **innovation** and **entrepreneurship**, from the perspective of, e.g., institutional theory, social exchange theory, and social network theory, by adopting either quantitative or qualitative methodologies."*

Examples of BSc and MSc topics

- Digitization in agrifood.
- How can platform owners stimulate circular business activities in the construction industry / ecosystem?
- How does moving towards product-as-a-service impact a firm's business model? (Moving to a circular economy)
- *Datafication* of agrifood.
- Lean in agrifood.
- IP strategies for life sciences
- Coalition dynamics in innovative ecosystems

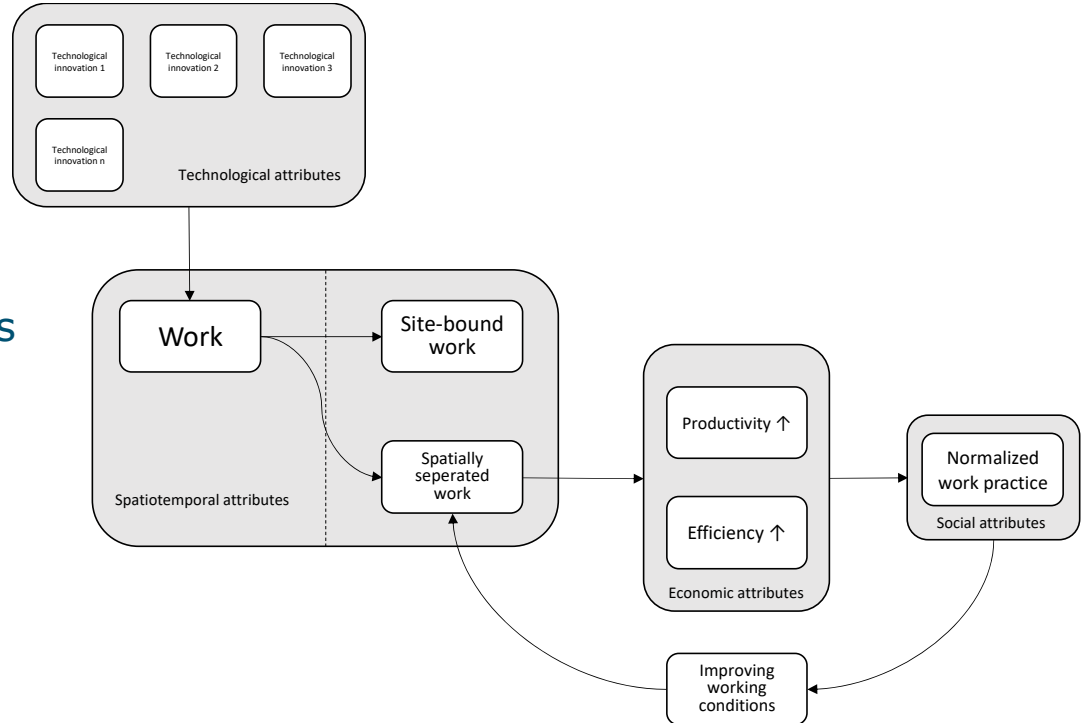
Dr. Herman Kok



Core Expertise:

Facility Management

- Environment-user relationships
- Workplace transformation
- Vital work environments



Examples of BSc and MSc topics

- The effects of working in organizational workspaces, remotely and/or the metaverse on workers' mind, mood, health, and behavior
- Explaining the diffusion of workplace transformations as a radical change of the spatiotemporal aspects of work and work practices
- The conditions for a way of working to become socially normalized
- Innovate and create new workplace experiences using service design and customer journey mapping approaches
- Explaining differences in business performance between companies with different spatiotemporal constructs

Dr Jasmina Rüger



Core Expertise:

Health Care Management

Thesis topics

- Decision-making in healthcare >> e.g., the relationship between patients and healthcare professionals, or healthcare organisations/government
- Social networks, especially (peer) advice
- Dissemination of (mis)information in online health communities and social media platforms

Dr. Gerben van der Velde



Core Expertise:

- Economics of Innovation
- Entrepreneurship
- Data analysis / survey analysis
- Financial Management / Corporate Finance

Dr. Carlos Barzola



- Agricultural Innovation Systems
- (Sustainable) Innovation Management & rural development
- Agricultural value chain
- Small farmers entrepreneurship
- Circular economy



Dr. Negin Salimi



Core Expertise:

- Technology Management
- (Responsible) Innovation
- Entrepreneurship
- Sustainability
- Collaboration success factors
- Decision-making

Examples of BSc and MSc topics

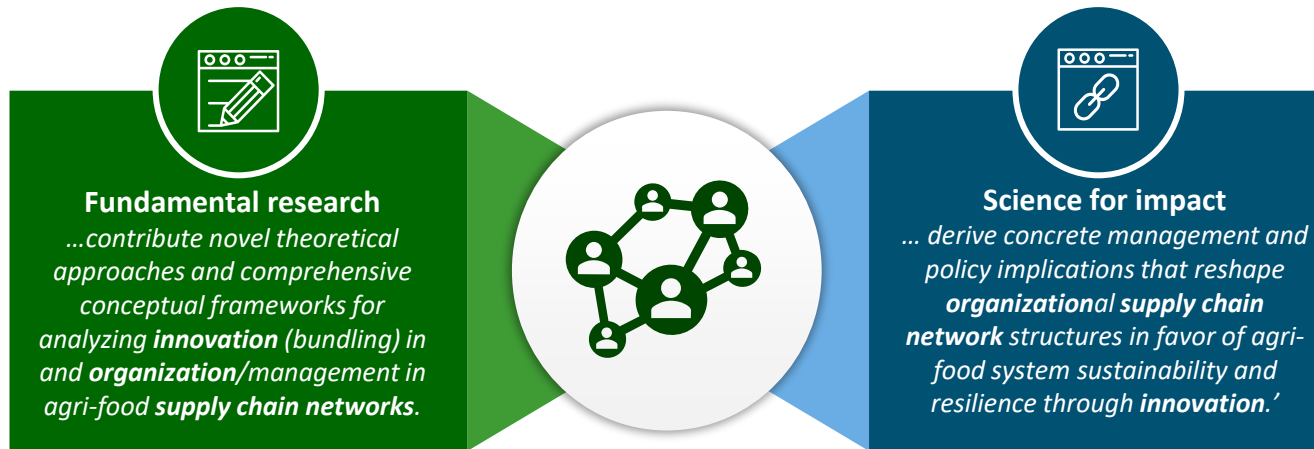
- Collaboration performance/success measurement
- Impact of entrepreneurship ecosystem on the success of start-ups
- Drivers and barriers of sharing information in collaboration in a supply chain
- Sustainability for a business model
- Decision analysis in a supply chain

Dr. Verena Otter



Core Expertise:

Innovation & Organization in Supply Chain Networks



Examples of BSc and MSc topics

- Stakeholder engagement for sustainability in agri-food open innovation networks
- Organizational innovations (e.g., crowd-farming) for greater sustainability in EU food supply chains
- Russo-Ukrainian crisis effects on international food supply chain network structures
- Acceptance of product and process innovations in EU food supply chains
- Agricultural cluster formation from the perspective of the cluster life cycle approach – Is there evidence of stagnation?
- Digital disruption in agriculture from a New Institutional Economics perspective
- Are the new due diligence supply chain laws game changers for best practices in the EU's agri-food sector?
- Business Model Innovations and the external organization of agri-food start-ups

Dr. Geoffrey Hagelaar



Core Expertise:

Food Quality Management / Supply (chain) management

Thesis Topics

- Upscaling of the production of insects and its implication throughout the insect supply chain
- Food quality management systems for small food processors
- Integrating new technologies in operations and in business models of food companies
- Entrepreneurship in developing countries

Dr. Shaya Ashouri



Core Expertise:

- **Entrepreneurship and small business**
 - Sustainable/circular Entrepreneurship
 - International Entrepreneurship
 - Gender Entrepreneurship
 - Business Model Innovation

- **Entrepreneurship and Institutions**
 - Emerging Economies

Examples of BSc and MSc topics

- How can small businesses effectively compete in today's dynamic market (emerging economies), considering both economic competitiveness and sustainable practices?
- What are the key challenges faced by entrepreneurs in starting and managing small businesses, and how can these challenges be addressed while promoting sustainable business practices?

Dr. Jilde Garst



Core Expertise:

Organizing corporate sustainability & responsible innovation

How to organize businesses to contribute to a sustainable and just future?

How do firms innovate responsibly in a society in transition?

How do firms respond to conflicting views in society about sustainability transitions?



Examples of BSc and MSc topics

- Standards, certifications, front-of-pack labels, and other voluntary rules for sustainable business (incl. healthy food)
- Innovation management and knowledge absorption for responsible/green/social/sustainable innovation
- Changes in organizational values & norms, and other informal rules
- Healthy food innovation
- Reporting of sustainability/CSR/non-financial information
- The role of the university in sustainability transitions

Overview of my work:

- [LinkedIn](#)
- [Google Scholar](#)
- [ResearchGate](#)

Dr. Douglas Robinson



Core Expertise:

- International business / strategic management
- Digitalisation in agrifood
- Supply chain and organisational resilience
- Quantitative methods

Examples of BSc and MSc topics

- Sustainability implications of internationalisation through foreign direct investments and mergers and acquisitions
- Outward investments and effects on supply chain/firm resilience
- Emerging economies and their outward foreign direct investments in agribusiness

Dr. Giustina Pellegrini



Core Expertise:

Managing and organising agri-food value chains, focusing on sustainability and innovation

A. Business Innovation Transition in Agri-Food Systems:

- developing innovative business models within the agri-food sector
- examining the dynamic processes involved in business innovation transitions within agri-food systems
- understanding the impact of technological transformation on agri-food SMEs

B. Enhancing Sustainability, Efficiency, and Effectiveness across value chains:

- assessing and enhancing sustainability, efficiency, and effectiveness at every stage of the agri-food value chain
- social sustainability of innovations within food value chains, using a comprehensive life cycle thinking approach

Examples of BSc and MSc topics

- Upscaling of the production of insects and its implication throughout the insect supply chain
- Food quality management systems for small food processors
- Integrating new technologies in operations and business models of food companies
- Assessing and enhancing sustainability, efficiency, and effectiveness in the value chain

Dr. Yvette Baggen



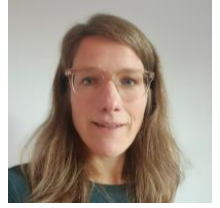
Core expertise

- Entrepreneurial learning of students and professionals in different contexts – such as higher education and businesses.
- How to design, implement and evaluate entrepreneurial learning journeys together with the entrepreneurial ecosystem (i.e., external stakeholders like professionals) for creating societal impact.

Examples of BSc and MSc topics

- The entrepreneurial mindset of students and/or professionals
 - How to define the entrepreneurial mindset? How to measure it? And how to develop such a mindset?
- Organisational learning, innovation & intrapreneurship in businesses at the individual and team level
- Realizing societal impact via entrepreneurial ecosystems
 - How could businesses, knowledge institutes (e.g., universities), and entrepreneurs work together to have societal impact?
- Investigating the impact of authentic, challenge-based, entrepreneurial learning journeys on students and professionals

Dr. Renate Wesselink



Core expertise:

- (Learning and development) of corporate social responsibility/ sustainability managers
- Organizational and team learning in the framework of responsible innovation and sustainability
- Human Resource Management and Change management in the field of sustainability

Examples of BSc and MSc topics

- The role and development of CSR/sustainability managers in organizations;
- The organizational design to host bottom up learning and change processes;
- Human resource management to support sustainability implementation;
- Conceptualization and research method/instrument development for the concept of the (responsible) learning organization;
- Pro-Environmental Behaviour in the workplace;
- Preparation of students for the labour market in which sustainability is still a matter of the business case

Questions?

BMO thesis coordinator Dr. Jilde Garst
bmo014@wur.nl

BMO thesis ring coordinator Willemien Nieuwstad MSc
thesisring.bmo@wur.nl

BMO office Anna Tran
office.bmo@wur.nl

